

Walk Behind Power Trowel

WALK BEHIND



WALK BEHIND POWER TROWEL

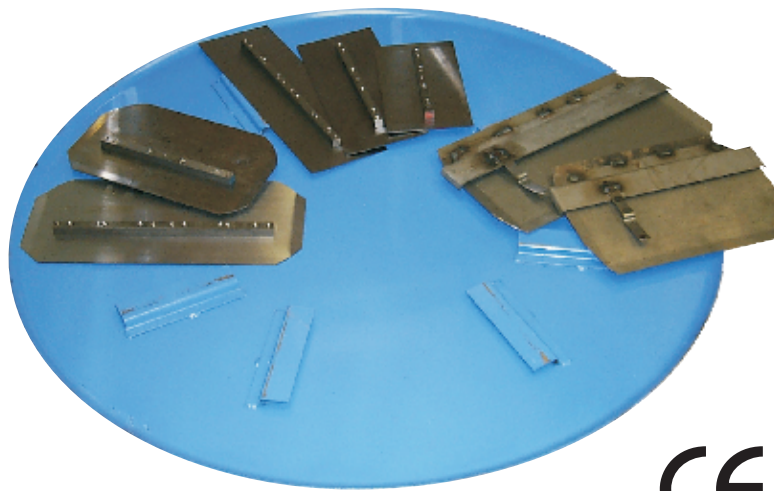
Model	Size (nominal)	Standard Engines*	Finish Blade	Combination Blade	Float Blade	Float Pan	Dry Weight**
B424 Edger	24" (60cm)	Honda GX120	n/a	4 3/4" x 9" (12cmx23cm)	n/a	23 5/8" (60 cm)	123 lbs (56 Kg)
B430 Edger	30" (75cm)	Honda GX160	n/a	4 3/4"x10 5/8" (12cmx27cm)	n/a	29 5/8" (75cm)	148 lbs (67 Kg)
B430	30" (75cm)	Honda GX160	6" x 10 1/2" (15cmx27cm)	n/a	n/a	n/a	162 lbs (74 Kg)
B436	36" (90cm)	Honda GX160	6" x 14" (15cmx36cm)	8" x 14" (20cmx36cm)	10" x 14" (25cmx36cm)	36 1/2" (93cm)	170 lbs (77 Kg)
B446	46" (120cm)	Honda GX270	6" x 18" (15cmx46cm)	8" x 18" (20cmx46cm)	10" x 18" (25cmx46cm)	48 1/2" (123cm)	255 lbs (116 Kg)

* Other Engines may be available, please consult your representative for availability at time of order.

** Dry weight is the complete unit less engine oil and fuel.

Bartell Original Trowel Blades, Float Blades & Float Pans

Bartell Morrison Inc. offers the only certified original replacement Power Trowel finish blades, combination blades, floats and float pans. Specify only original replacement trowel blades for your Bartell Power Trowel to maximize your productivity.



For more information, product demonstration, or details on purchase, lease and rental plans, please contact your local BMI Dealer.

BARTELL MORRISON INC.

31 Sun Pac Blvd., Brampton, ON Canada L6S 5P6
Tel 866-501-1683 • Local 905-458-5455 • Fax 905-458-5484
www.bartellmorrison.com • sales@bartellmorrison.com



WALK BEHIND 



The Bartell Power Trowel

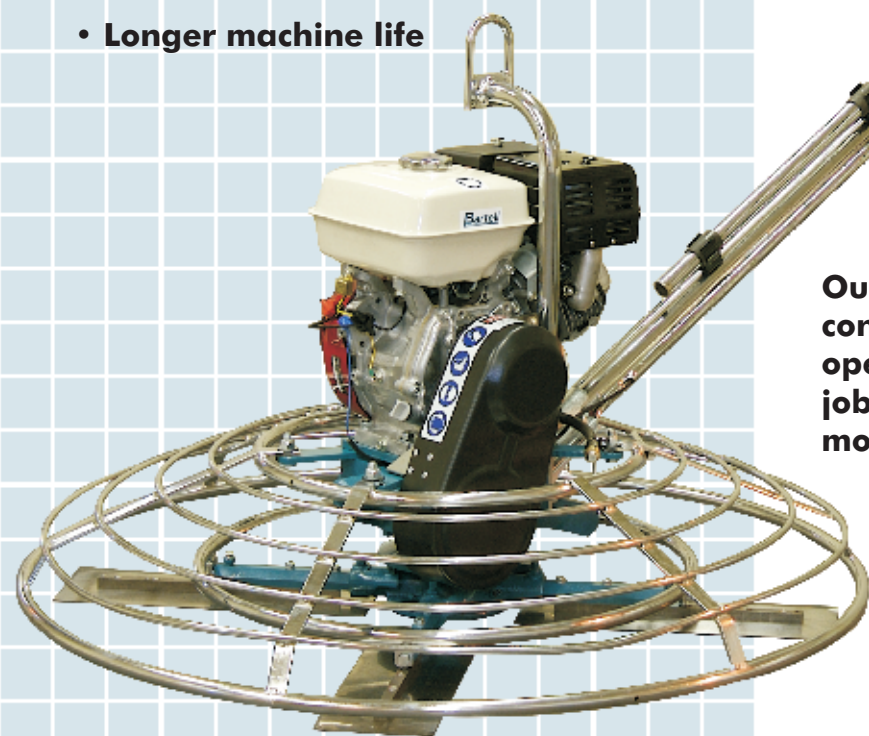
The choice of the construction industry around the world for more than 40 years, Bartell Power Trowels are designed, engineered and built for a competitive edge.

Field tested and proven dependable under the toughest conditions, Bartell Power Trowels are available in a variety of models, sizes and power choices suited to every situation.

Designed and built to exacting tolerances with precision machining makes the performance difference.

More than 40 years ago Bartell Power Trowels entered the market place and many of those early trowels are still in operation. From the start and continuing today we build trowels that allow a contractor to start sooner, finish better and that last longer. A Bartell Power Trowel is designed, engineered and built for a competitive edge:

- Greater productivity
- Less down time
- Longer machine life



B446

The proof is in the details. Every part of the Bartell Power Trowel from the concrete up to the operator is made with superior floor finishing in mind. Our precision machined spider plate assemblies make smooth surfaces a reality, while the Bartell gearbox reliably transmits the needed power to get the job done.

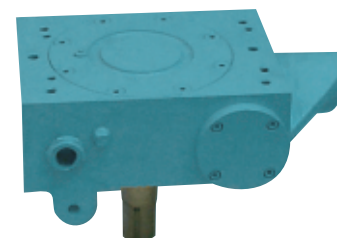
Our sturdy Tri-tube handle places control easily in the hands of a skilled operator and, for convenience on the job site we offer multiple methods to move the trowel around.

In choosing a Bartell Power Trowel you get more than a piece of equipment, you get over 40 years of experience in building a trowel that you can rely on to get the job done.

BARTELL POWER TROWEL FEATURES

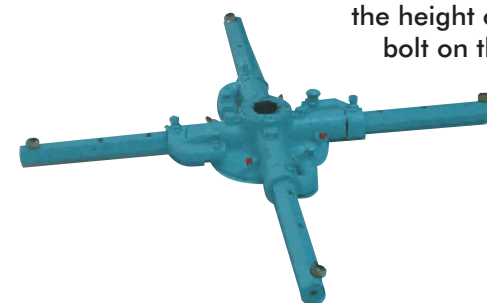
The Gearbox

There are many imitations but only one original Bartell gearbox. Our combination of design, precision machining and premium materials combined make the difference. The extra heavy duty, high tensile strength steel shafting, SAE grade bronze worm gear, precision ground hardened steel worm, tapered roller thrust bearings and precision single row ball bearings support the load while keeping everything aligned in a heat treated cast alloy aluminum gear casing.



The Spiderplate Assembly

Balance is the hallmark of a Bartell Power Trowel. Long wearing cast iron, precision machined using our special techniques provides the ability to achieve extremely close fits between the trowel arm and bore of the spiderplate, a fit that is virtually unattainable with the use of molded inserts. A taper fit with the gearbox shaft ensures a snug match that keeps everything running true. An adjustment bolt near the end of the trowel arm allows for emergency on-the-job re-alignment of a trowel blade. For routine maintenance we offer a trowel arm adjustment jig for calibrating the height of the round head bolt on the lift lever arm.



Tri-Tube Handle

Engineered to provide greater leverage and ease of control, three heavy gauge steel tubes are welded laterally to provide rigidity and strength to the entire length of the handle. The three primary operator controls are located at the top of the handle in close proximity to the operator for convenience and easy operation. A contoured handle bar and rubber hand grips provide for a comfortable hold on the trowel. The steel fabricated mounting bracket encases the lower end of the handle assembly providing a firm connection with the gearbox.



Job Site Handling

For ease of handling and moving around on the job site we offer optional hoist hooks and carry bars for your trowel. Hoist hooks are available for the range of trowel sizes and engine choices. Carry bars, which slip easily into the nose of the gearbox are available for the B436 and B446 Trowels.

