



CM 501

SPARE PARTS LIST

1 Accessories

Art.Num.	Description
00310004556	Conveyor cart with tilting table 0-45°
00310004537	Support to bevel tiles at 45°
00310004608	Cutting head locking bar

2 Spare parts list

POS	PAGE	CODE	DESCRIPTION	TYP (*)	REMARKS
1	EC01	00310325955	Waterpump	W	
2	EC02	00310004024	Level arm	S	
3	EC02	00310004025	Blade shaft bolt	S	
4	EC02	00310004190	Rubber grip, cutting head	S	
5	EC01	00310004193	Rubber grip, handle	S	
6	EC01	00310004199	Spanner 22mm	S	
7	EC01	00310004257	Buffer	S	
8	EC02	00310004262	Water tap	W	
9	EC02	00310004270	Water hose	W	
10	EC01	00510058605	blocking carriage	S	
11	EC01	00310004289	Spring	S	
12	EC01	00310002086	Bearing	W	
13	EC01	00310004229	Spanner 17mm	S	
14	EC01	00310004053	Spanner 19mm	S	
15	EC02	00310004412	Bushing	W	
16	EC02	00310004413	Water flap blade guard	W	
17	EC02	00310004414	Excenter	S	
18	EC01	00310004433	Pivot bearing	W	
19	EC01	00310004434	Fastener	S	
20	EC01	00310002246	Ring	W	
21	EC02		Outer collar	S	See specific parts
22	EC02	00310004470	Blade shaft bearing	W	
23	EC01	00310004778	Pump clip	S	
24	EC01	00310011966	Water curtain	W	
25	EC01	00310004724	Lock arm	S	
26	EC01	00310064856	Guide a cut	S	
27	EC02	00310004754	Fixing kit	S	
28	EC02	00310004767	Bushing bracket	S	
29	EC01	00310004776	Drain plug	S	
30	EC02	00310004792	Bearing cover	S	
31	EC02	00310005687	Pivot bracket	S	
32	EC01	00310002145	Water hose	W	
33	EC01	00310004877	Foot pedal	S	
34	EC01	00310004878	Pivot plate	S	
35	EC01	00310004879	Pivot pin set	S	
36	EC01	00310004880	Feed tube	S	
37	EC01	00310004881	Grip	S	
38	EC01	00310389267	Connecting bar	S	

39	EC02	00310004954	Pulley, water pump	S	
40	EC01	00310004955	Fixing kit, water pump	S	
41	EC02	00310343734	Cutting head	S	
42	EC02	00310343735	Back plate	S	
43	EC02	00310343736	Belt guard	S	
44	EC02	00310004962	Cover, blade shaft bold	S	
45	EC01	00310343737	Frame assy	S	
48	EC02		Water nozzles	W	See specific parts
49	EC02		Blade guard	S	See specific parts
50	EC02		Blade shaft assy	S	See specific parts
51	EC02		Electric motor	S	See specific parts
53	EC02		Switch	W	See specific parts
54	EC02		V belts	W	See specific parts
55	EC02	00310004750	Tension screw	S	
56	EC02	00310004888	Pulley, blade shaft	S	
57	EC02		Pulley motor	S	See specific parts
60	EC01	00310007790	Cart wood	w	
61	EC02		Blade shaft	S	See specific parts
62	EC01	00310004676	Cart sheaves (Set of 4)	W	
63	EC01	00310005686	Conveyor cart	S	
64	EC01	00310005688	Back stop	S	
66	EC01	00310002288	Pump protection plate	S	
67	EC01	00310005743	Drive end	W	
68	EC01	00310005744	Flexible shaft	W	
69	EC01	00310005745	Pump end	W	
70	EC02	00310005746	Impellor water pump	W	
71	EC02	00310005747	Pump filter	W	
72	EC01	00310004433	Pivot bearing	W	

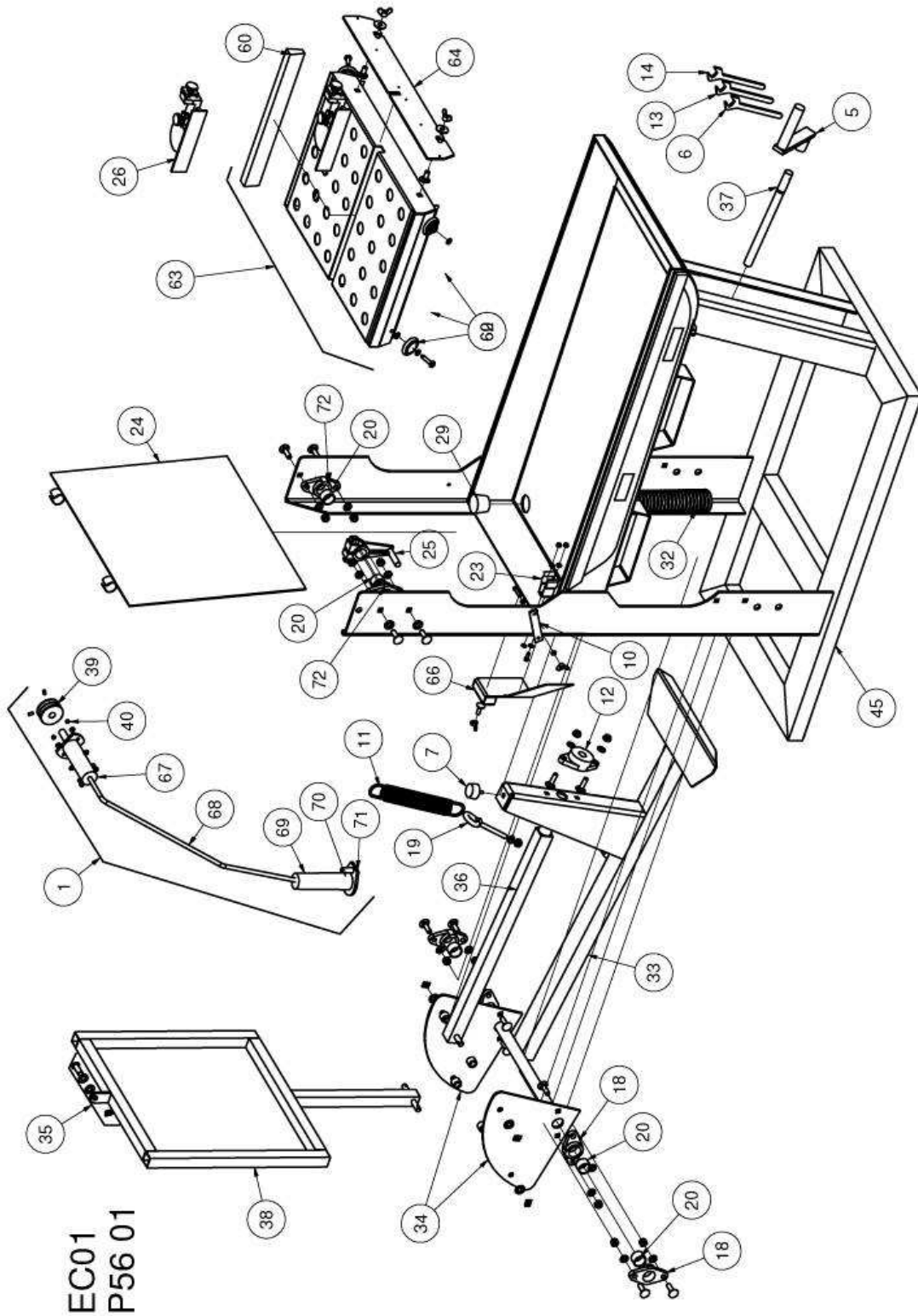
(*): S = Spare part, W = Wear part

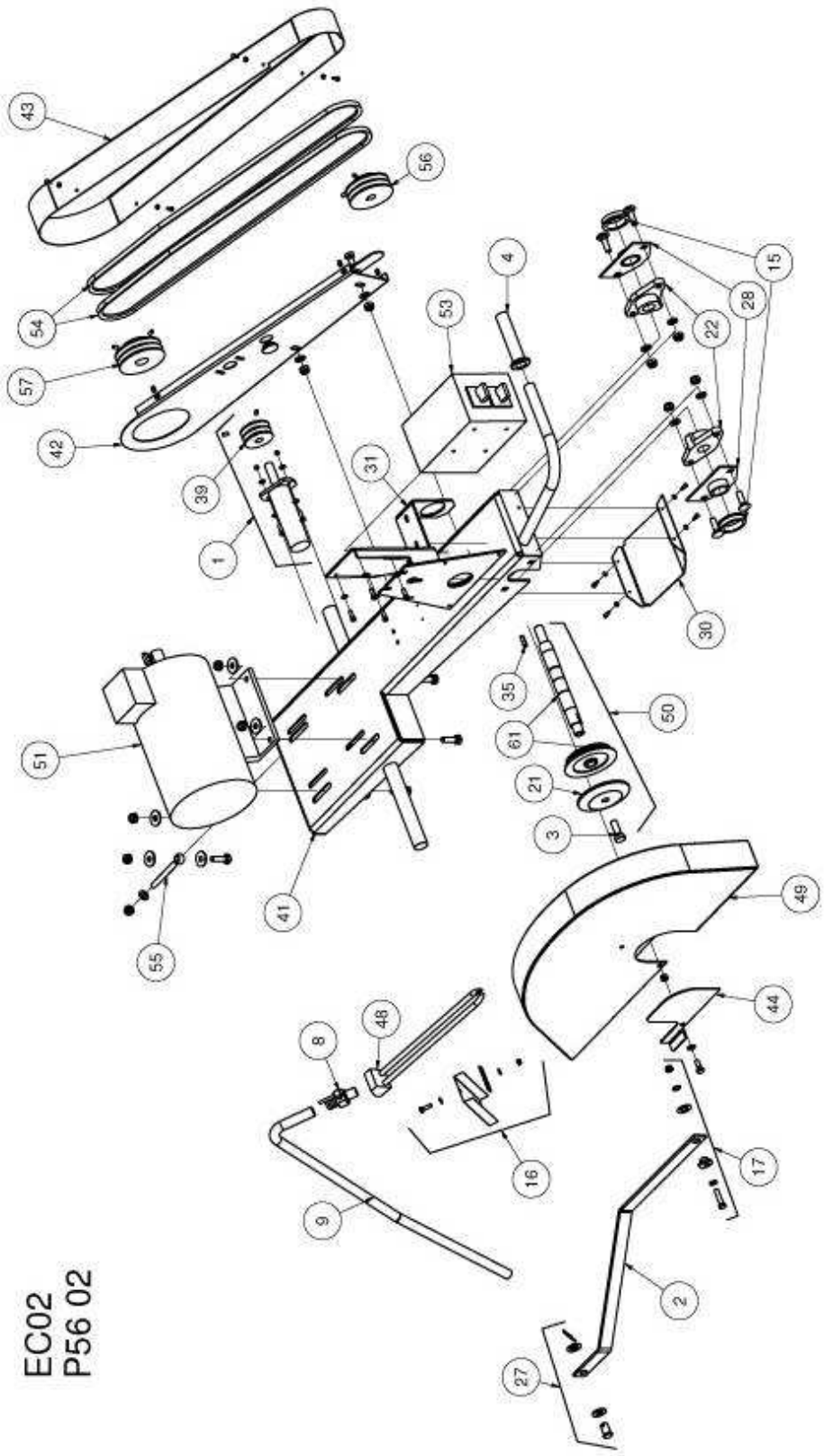
Wear parts are worn out through normal use of the machine. The wear period depends a lot on the intensity of use of the machine. Wear parts must be serviced, used and eventually changed following the indications of the manufacturer. Any wear due to normal use of the machine will not be considered as a case of warranty. Genuine Clipper replacement parts should always be used.

3 Specific spare parts list

POS	PAGE	DESCRIPTION	TYP (*)	Machines CM 501							
				1.40.3 230/400V BI 70184628234	1.40.3 400V 70184628230	3.20.1 115V 70184628235	3.30.1 230V 70184628236	3.55.3 230/400V BI 70184628233	3.55.3 400V 70184627018	3.55.3 525V 70184628238	5.55.3 400V 70184628232
21	EC02	Outer collar	W	00310004410	00310004410	00310004438	00310004438	00310004438	00310004438	00310004438	00310004438
48	EC02	Water nozzles	W	00310390028	00310390028	00310343738	00310343738	00310343738	00310343738	00310343738	00310390027
49	EC02	Blade guard	W	00310343739	00310343739	00310343745	00310343745	00310343745	00310343745	00310343745	00310343751
50	EC02	Blade shaft assy	W	00310004163	00310002186	00310005676	00310005676	00310005676	00310005676	00310005676	00310005676
51	EC03	Electric motor	W	00310004163	00310004197	00310006949	00310004173	00310004441	00310004128	00510052213	00310004128
53	EC02	Switch	S	00310005683	00310005684	00310006864	00310004332	00310005683	00310005684	00310005684	00310005684
54	EC02	V belts	S	00310004439	00310004439	00310004439	00310004439	00310004440	00310004440	00310004440	00310004440
57	EC02	Pulley motor	S	00310004893	00310004893	00310004898	00310004898	00310004895	00310004895	00310004895	00310004895
61	EC02	Blade shaft	W	00310005750	00310005750	00310005677	00310005677	00310005677	00310005677	00310005677	00310005677

4 Exploded parts drawings



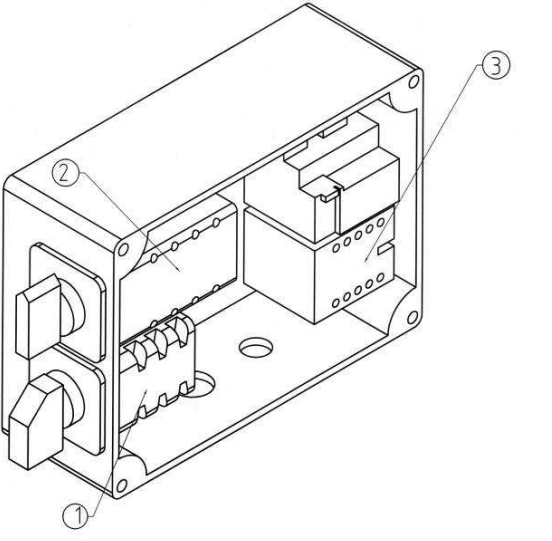


EC02
P56 02

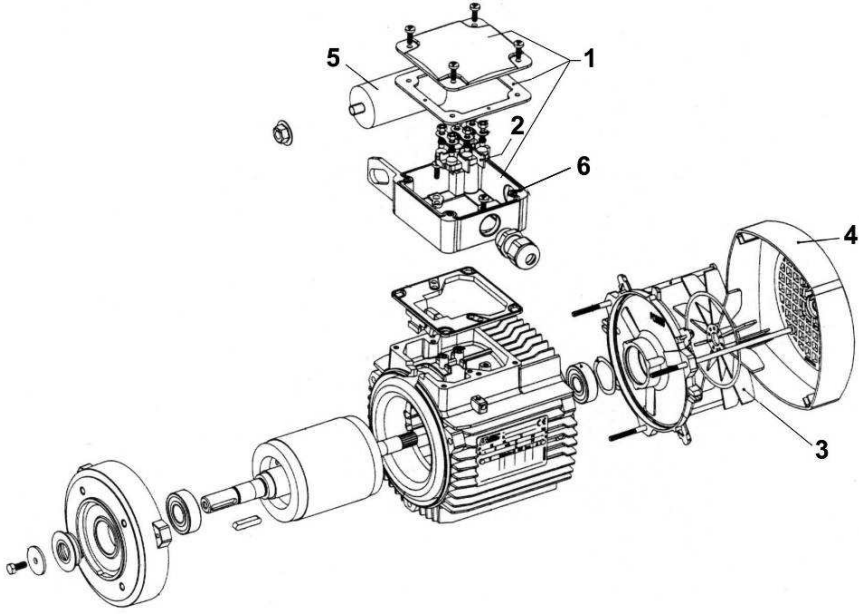
5 Exploded drawings and spare parts list for electrical equipment

5.1 Switch 400V

POS.	ART.NUM.	DESCRIPTION
1	00310006622	Main switch
2	00310006618	Star-triangle switch
3	00310006617	Relay

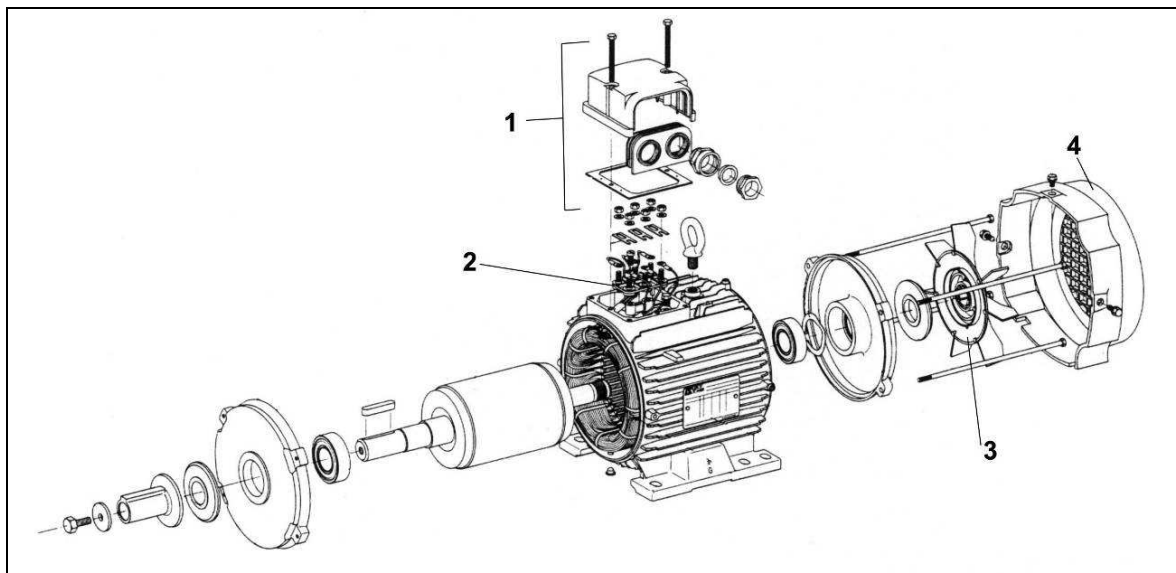


5.2 Motor 230V and 115V



POS.	ART.NUM.	DESCRIPTION
1	00310004243	Connecting box
2	00310004248	Connecting plate
3	00310004240	Cooling fan
4	00310004239	Fan cover
5	00310004329	Condensator
6	00310005068	Overload protection (motor 230V)
	00310006961	Overload protection (motor 115V)

5.3 Motor 4kW 400V et bi-tension 4kW 230V/400V



POS.	ART.NUM.	DESCRIPTION
1	00310004250	Connecting box
2	00310004340	Connecting plate
3	00310004251	Cooling fan
4	00310004263	Fan cover



SAINT-GOBAIN ABRASIVES

190, Bd. J. F. Kennedy
L-4930 BASCHARAGE
LUXEMBOURG

Tel.: ++352 50401-1

Fax: ++352 501633

e-mail: sales.nlx@saint-gobain.com

www.construction.norton.eu

15.04.2009