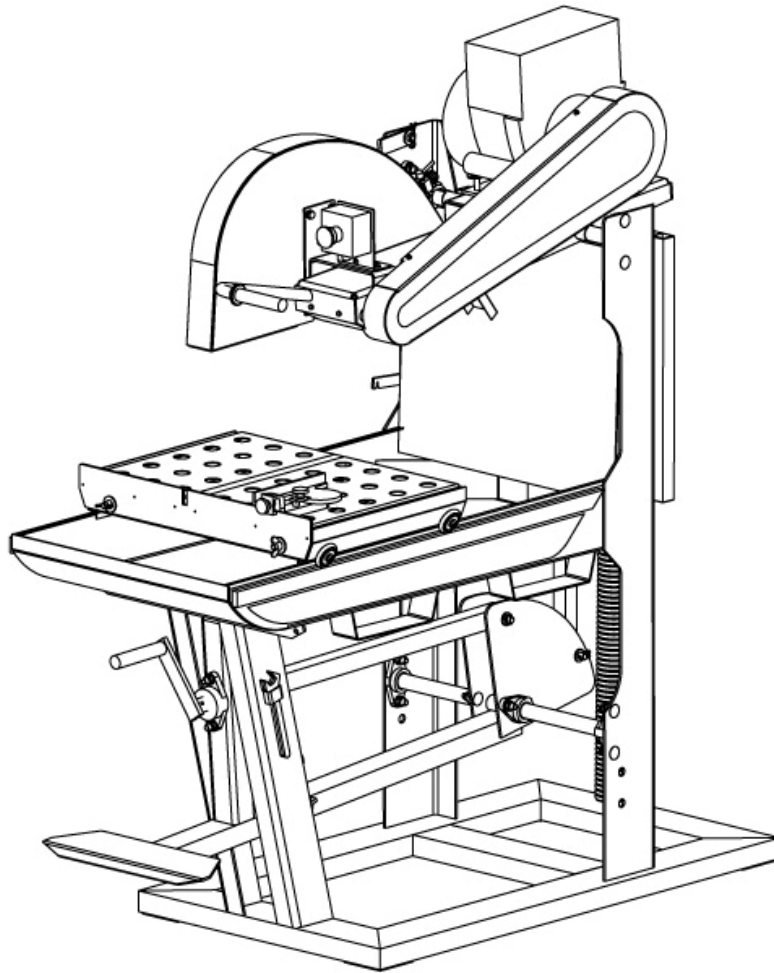


NORTON



CM 501 HONDA

SPARE PARTS LIST

1 Accessories

Art.Num.	Description
00310004556	Conveyor cart with tilting table 0-45°
00310004537	Support to bevel tiles at 45°
00310004608	Cutting head locking bar

2 Spare parts list

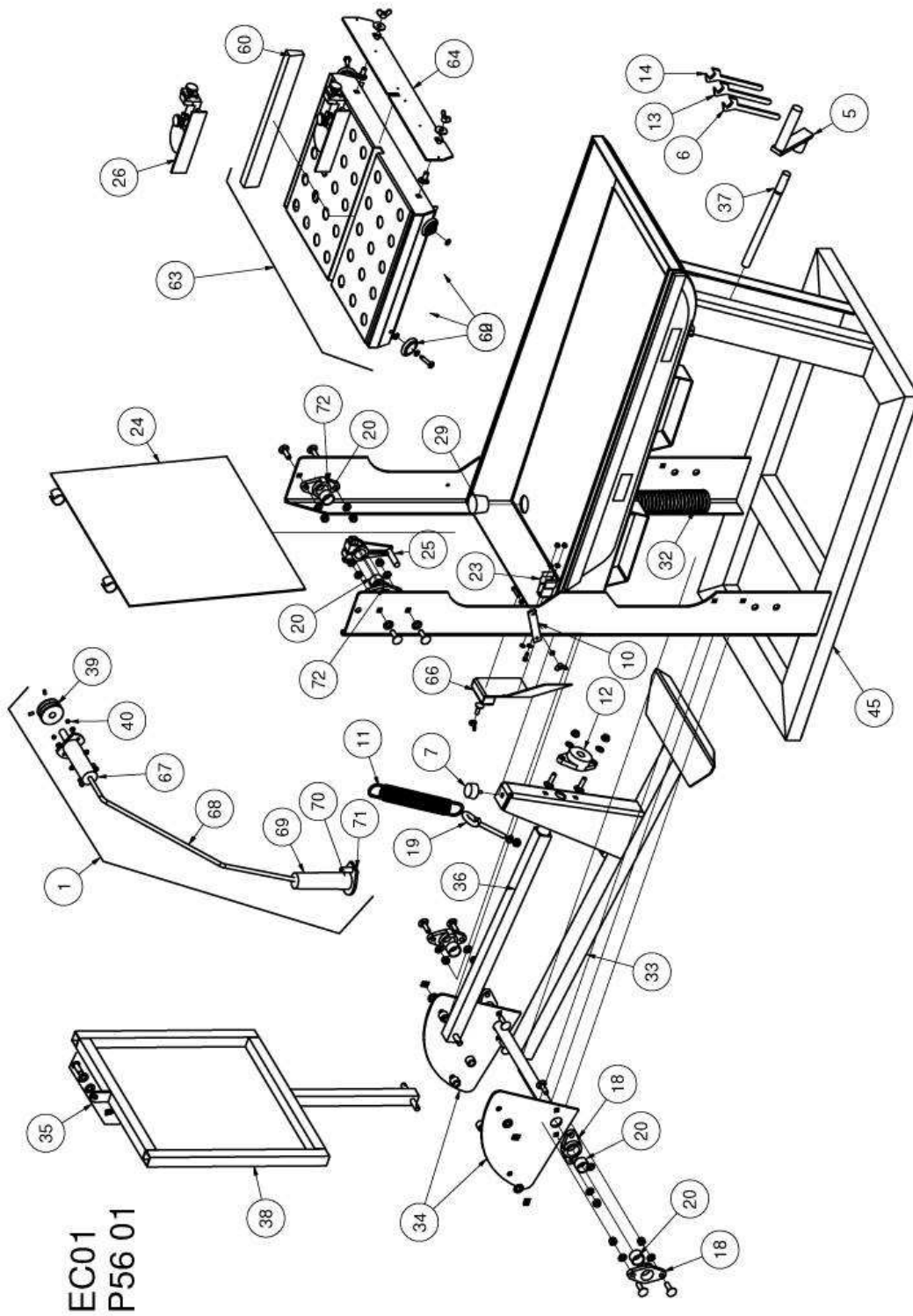
POS	PAGE	CODE	DESCRIPTION	TYP (*)	REMARKS
1	EC01	00310325955	Waterpump	W	
2	EC03	00310004024	Level arm	S	
3	EC03	00310004025	Blade shaft bolt	S	
4	EC03	00310004190	Rubber grip, cutting head	S	
5	EC01	00310004193	Rubber grip, handle	S	
6	EC01	00310004199	Spanner 22mm	S	
7	EC01	00310004257	Buffer	S	
8	EC03	00310004262	Water tap	W	
9	EC03	00310004270	Water hose	W	
10	EC01	00510058605	blocking carriage	S	
11	EC01	00310004289	Spring	S	
12	EC01	00310002086	Bearing	W	
13	EC01	00310004229	Spanner 17mm	S	
14	EC01	00310004053	Spanner 19mm	S	
15	EC03	00310004412	Bushing	W	
16	EC03	00310004413	Water flap blade guard	W	
17	EC03	00310004414	Excenter	S	
18	EC01	00310004433	Pivot bearing	W	
19	EC01	00310004434	Fastener	S	
20	EC01	00310002246	Ring	W	
21	EC03	00310004438	Outer collar	S	
22	EC03	00310004470	Blade shaft bearing	W	
23	EC01	00310004778	Pump clip	S	
24	EC01	00310011966	Water curtain	W	
25	EC01	00310004724	Lock arm	S	
26	EC01	00310064856	Guide a cut	S	
27	EC03	00310004754	Fixing kit	S	
28	EC03	00310004767	Bushing bracket	S	
29	EC01	00310004776	Drain plug	S	
30	EC03	00310004792	Bearing cover	S	
31	EC03	00310005687	Pivot bracket	S	
32	EC01	00310002145	Water hose	W	
33	EC01	00310004877	Foot pedal	S	
34	EC02	00310004578	Pivot plate	S	
35	EC01	00310004879	Pivot pin set	S	
36	EC01	00310004880	Feed tube	S	
37	EC01	00310004881	Grip	S	

38	EC01	00310389267	Connecting bar	S	
39	EC01	00310004954	Pulley, water pump	S	
40	EC01	00310004955	Fixing kit, water pump	S	
41	EC03	00310343734	Cutting head	S	
42	EC03	00310343735	Back plate	S	
43	EC03	00310343736	Belt guard	S	
44	EC03	00310004962	Cover, blade shaft bold	S	
45	EC01	00310343737	Frame assy	S	
48	EC03	00310343738	Water nozzles	W	
49	EC03	00310343745	Blade guard	S	
50	EC01	00310005676	Blade shaft assy	S	
51	EC01	00510019395	Engine Honda GX 200 RX4	S	
52	EC03	00310004027	Switch support	S	
53	EC03	00310004028	Stop motor	W	
54	EC03	00310004440	V belt XPZ 1550LW (set of 2)	W	
55	EC03	00310004750	Tension screw	S	
56	EC03	00310004888	Pulley, blade shaft	S	
57	EC03	00310004964	Pulley motor	S	
58	EC03	00310004965	Engine support	S	
60	EC01	00310007790	Cart wood	W	
61	EC03	00310005677	Blade shaft	S	
62	EC01	00310004676	Cart sheaves (Set of 4)	W	
63	EC01	00310005686	Conveyor cart	S	
64	EC01	00310005688	Back stop	S	
66	EC01	00310002288	Pump protection plate	S	
67	EC01	00310005743	Drive end	S	
68	EC01	00310005744	Flexible shaft	W	
69	EC01	00310005745	Pump end	W	
70	EC01	00310005746	Impellor water pump	W	
71	EC01	00310005747	Sieve water pump	W	
72	EC01	00310376416	Pivot bearing	W	

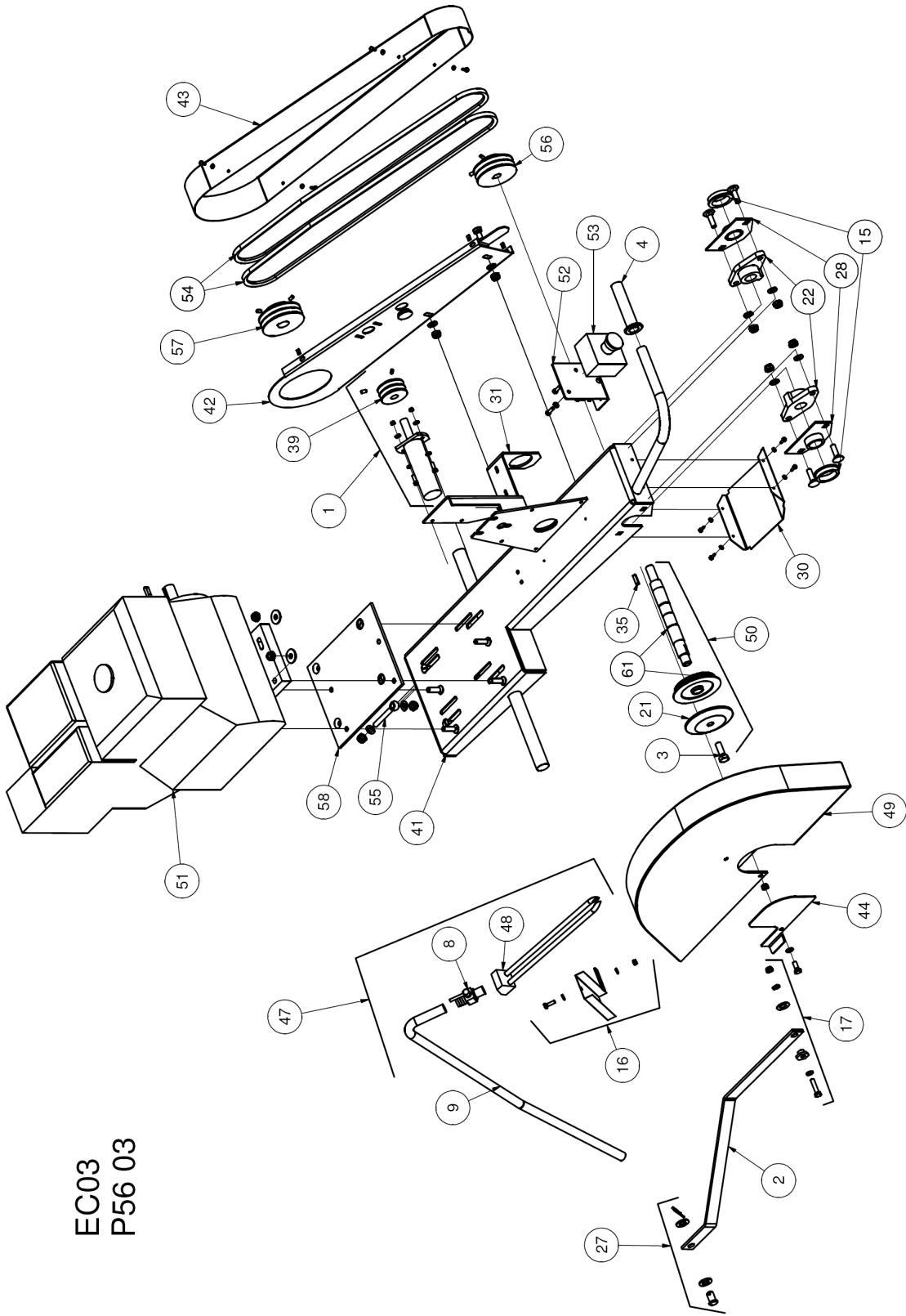
(*): S = Spare part, W = Wear part

Wear parts are worn out through normal use of the machine. The wear period depends a lot on the intensity of use of the machine. Wear parts must be serviced, used and eventually changed following the indications of the manufacturer. Any wear due to normal use of the machine will not be considered as a case of warranty. Genuine Clipper replacement parts should always be used.

3 Exploded parts drawings



EC03
P56 03





SAINT-GOBAIN ABRASIVES

190, Bd. J. F. Kennedy
L-4930 BASCHARAGE
LUXEMBOURG

Tel.: ++352 50401-1

Fax: ++352 501633

e-mail: sales.nlx@saint-gobain.com

www.construction.norton.eu

15.04.2009