



# Jumbo 900/1000

## SPARE PARTS LIST

---

## 1 Spare parts list

POS.	PAGE	ART.NUMB.	DENOMINATION	TYPE (*)	REMARKS
1	EC01	00310005355	Frame welded	S	
2	EC01	00310005476	Fixed wheel	W	
3	EC01	00310005477	Pivoting wheel	W	
4	EC01	00310005356	Guiding bar	W	
5	EC01	00310005357	Bar	W	
6	EC01	00310005272	Water protection	S	
7	EC01	00310004501	Side curtain	W	
8	EC01	00310004998	Side protection	S	
9	EC02	00310005358	Conveyor cart	S	
10	EC02	00310005279	Handwheel	S	
11	EC02	00310005280	Handgrip	S	
12	EC02	00310005281	Table roller	W	
13	EC02	00310005282	Arbor, handwheel	S	
14	EC02	00310005283	Arbor, back-wheel	S	
15	EC02	00310004179	Fixing ring	S	
16	EC02	00310004373 + 00310004849	Flange bearing	W	
17	EC02	00310002236	Front axle complete	S	
18	EC02	00310002237	Rear axle complete	S	
19	EC02	00310005284	Back stop complete	S	
20	EC02		Back stop	S	
21	EC02	00310005023	Fixing spring (set of 10)	S	
22	EC02	00310004291	Bearing	W	
23	EC02	00310004502	Rear curtain	W	
24	EC02	00310005285	Securing axle	S	
25	EC02		Wing nut	S	
26	EC02	00310002238	Conveyor cart complete	S	
27	EC02	00310005286	Eccentric rod	S	
28	EC02	00310005287	Bearing	W	
29	EC02	00310005032	Protection cover	S	
30	EC02	00310004306	Key SW 30	S	
31	EC02	00310004177	Key SW 36	S	
32	EC02	00310005359	Safety pin complete	S	
35	EC03	00310005360	Belts protection	S	
36	EC03	00310005361	Belts protection support	S	
37	EC03	00310002246	Flange bearing	W	
38	EC03	00310005362	Angle fixing	S	
39	EC03	00310005363	Cutting head	S	
40	EC03	00310002239	Spring	S	
41	EC03	00310005290	Closing plate	S	
42	EC04	00310002240	Blade shaft complete	S	
43	EC04	00310005364	Blade shaft	S	
44	EC04	00310005293	Blade shaft bearing	W	

45	EC04	00310005294	Inside flange	S	
46	EC04	00310005050	Outside flange	S	
47	EC04	00310005048	Clamp chuck	S	
48	EC04	00310004915	Key	S	
49	EC06	00310002241	Blade guard 900mm complete	S	Jumbo 900
		00310007798	Blade guard 1000mm complete	S	Jumbo 1000
50	EC06		Blade guard 900mm, inside part	S	Jumbo 900
			Blade guard 1000mm, inside part	S	Jumbo 1000
51	EC06	00310005366	Blade guard 900mm, outside part	S	Jumbo 900
			Blade guard 1000mm, outside part	S	Jumbo 1000
52	EC06	00310004800	Automatic closing	S	
53	EC06	00310004190	Handle	S	
54	EC06	00310004297	Water hose	W	
55	EC06	00310002247	Water nozzle	W	
56	EC06	00310002230	Water connection	W	
57	EC06	00310004009	Water tap	W	
58	EC06	00310004080	Geka hose union	W	
59	EC06	00310005367	Water nozzle	W	
60	EC06	00310005302	Curtain	W	
61	EC07	00310004991	Table complete	S	
62	EC07	00310005304	Back stop	S	
63	EC07	00310005303	Guide-a-cut	S	
64	EC08	00310005001	Water pan	S	
65	EC08	00310005368	Plug	S	
66	EC09	00310304383	Electric water pump	W	
	EC09	00310005709	Body of water pump	W	
	EC09	00310005610	Lower tap water pump	W	
67	EC09	00310005606	Fan for water pump	W	
68	EC09	00310335368	Filter water pump	W	
69	EC09	00310005005	Water pump support	S	
70	EC09	00310002194	Water hose complete	W	
71	EC09	00310003978	Geka union	W	
72	EC09	00310004080	Water hose	W	
73	EC10	00310004504	Electric motor 400V	S	Machine 70184613939 and 70184621669
			Electric motor 230/400V	S	Machine 70184610080
74	EC10	00310002248	Belts tensioner	S	
75	EC10	00310005306	Motor pulley	S	
76	EC10	00310005307	Blade shaft pulley	S	
77	EC10	00310004503	V Belts (set of 3)	W	
78	EC10	00310007485	Switch 400V	W	Machine 70184613939 And 70184621669
		00310007685	Switch 230V/400V	W	Machine 70184610080
79	EC10	00310005057	Plug	W	
80	EC10	00310002195	Hose protection	W	
81	EC11	00310005309	Spring stop	S	

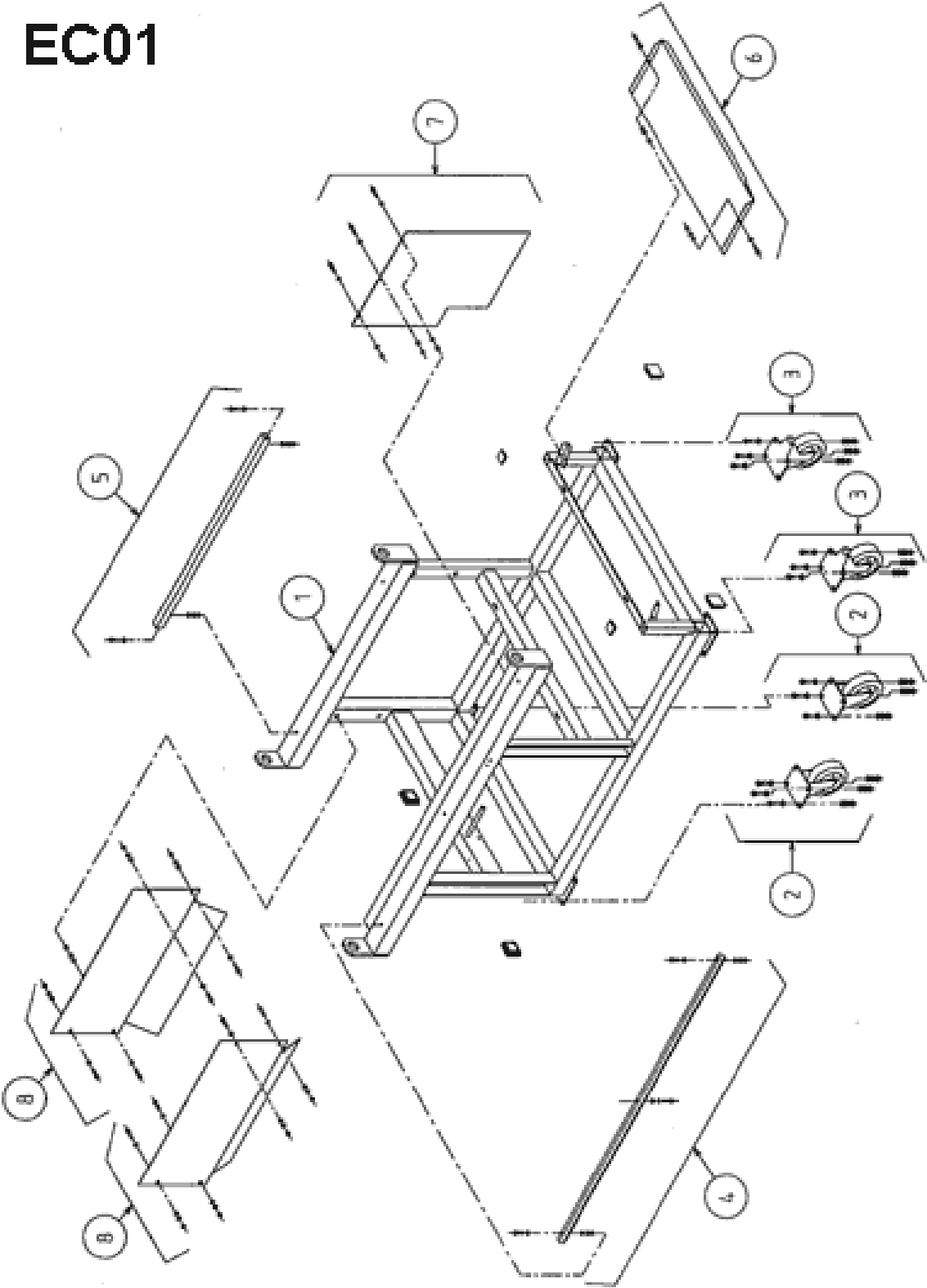
82	EC11	00310002242	Cutting depth indicator	S	
83	EC11	00310005310	Depth stop	S	
84	EC11	00310004396	Fixing handle	S	
85	EC11	00310005369	Adjusting device complete	S	
86	EC07	00310005488	Lath floor table	S	
87	EC08	00310006248	Decanting plate	S	

(\*): S = Spare part, W = Wear part

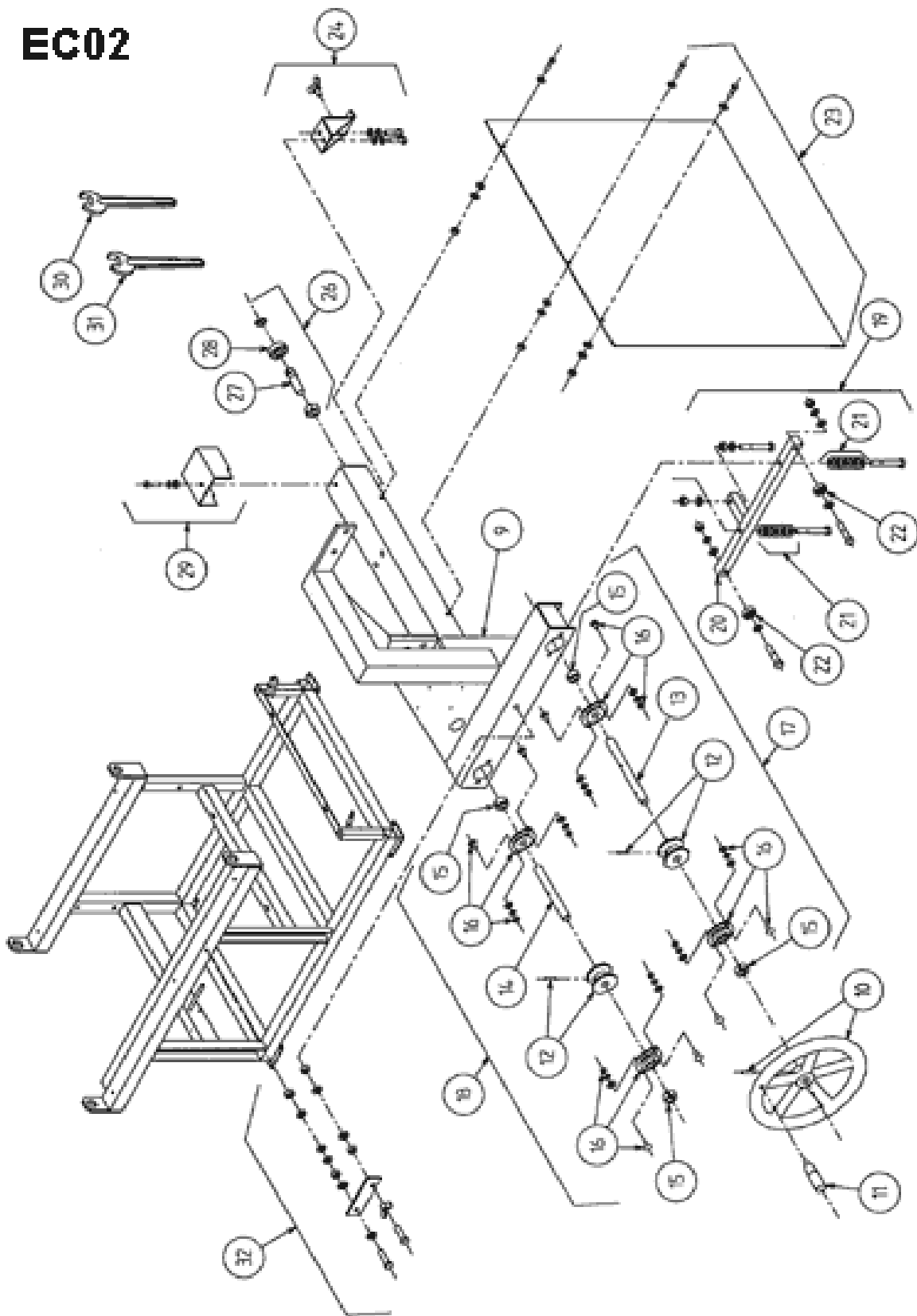
Wear parts are worn out through normal use of the machine. The wear period depends a lot on the intensity of use of the machine. Wear parts must be serviced, used and eventually changed following the indications of the manufacturer. Any wear due to normal use of the machine will not be considered as a case of warranty. Genuine Clipper replacement parts should always be used.

2 Exploded parts drawings

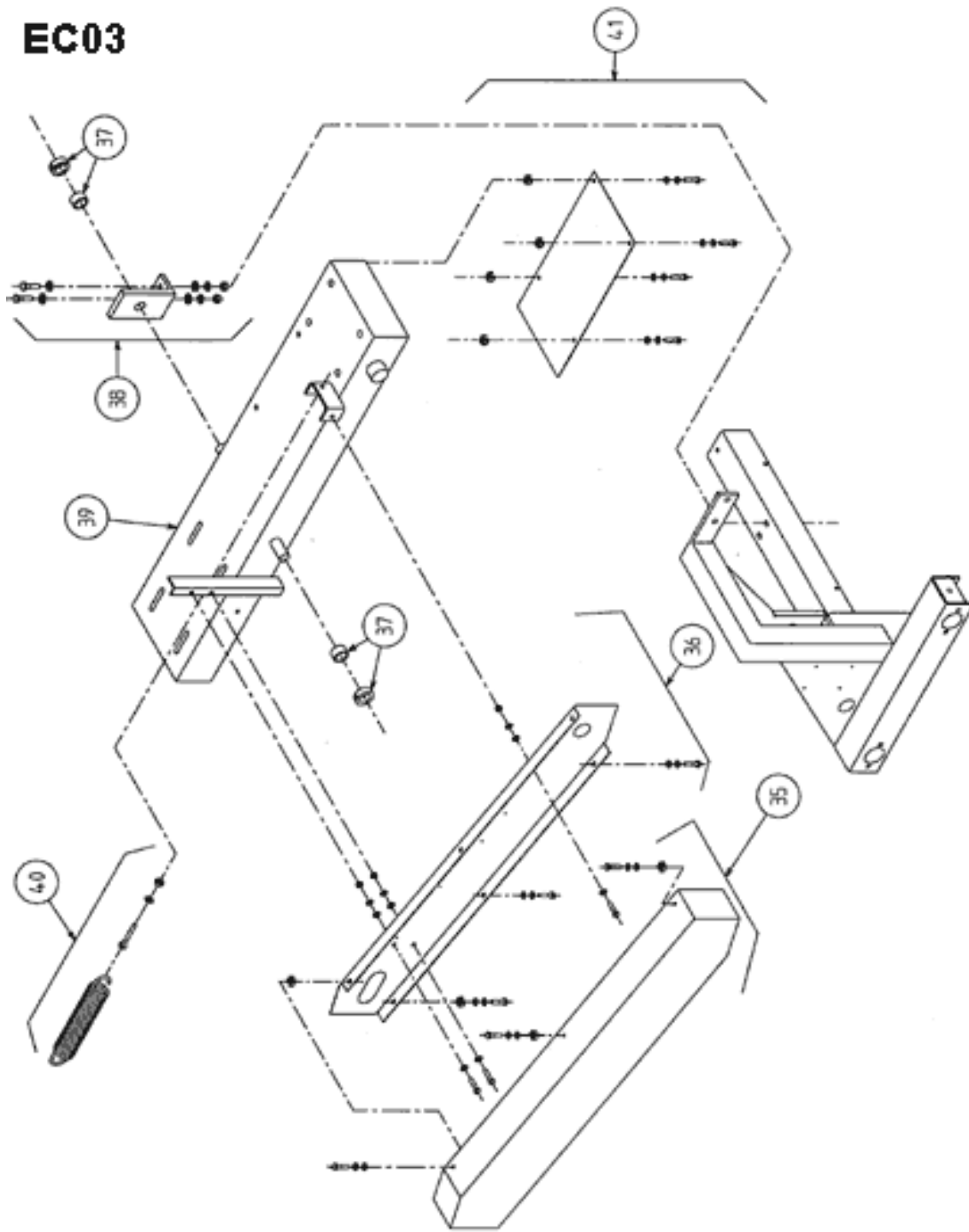
EC01



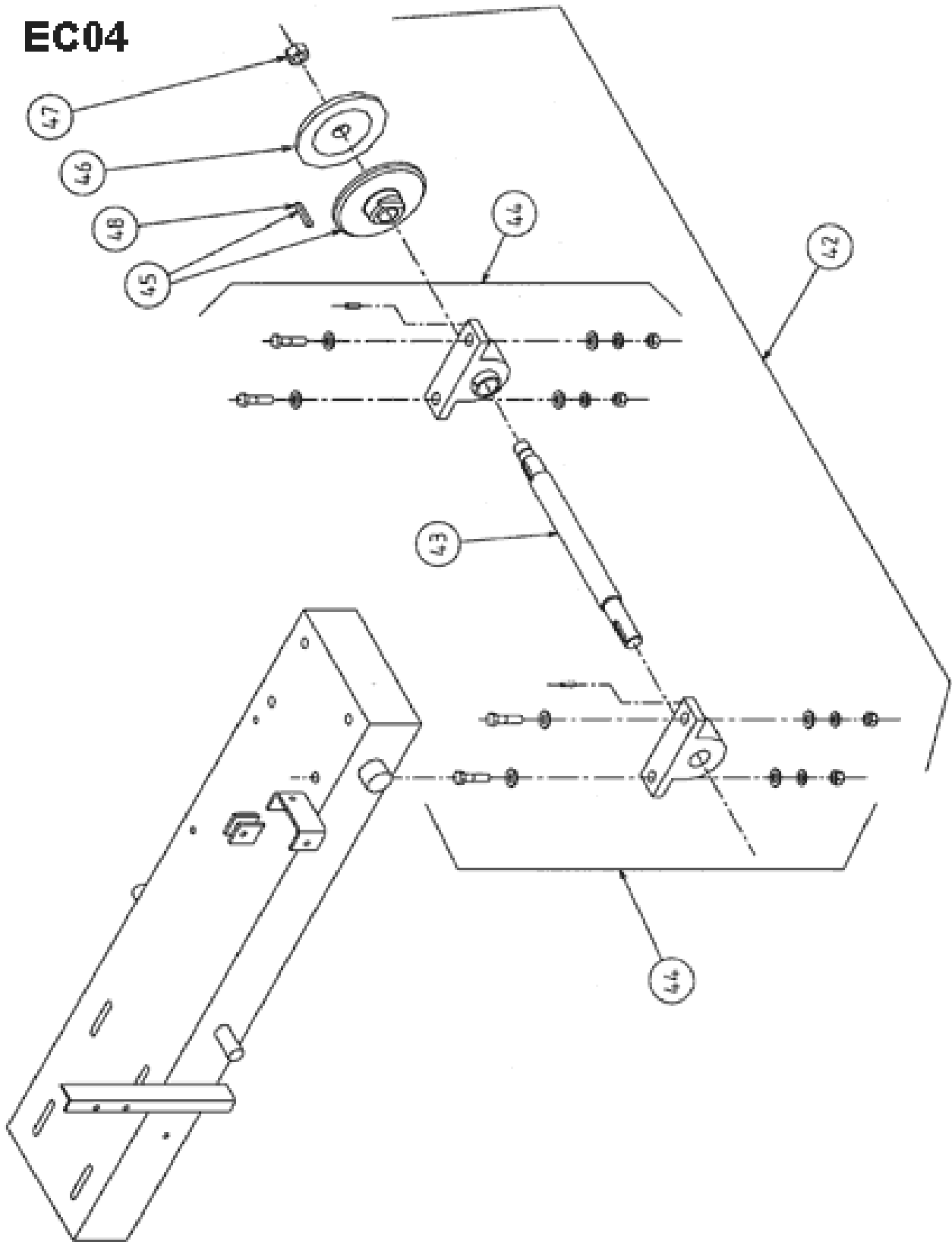
# EC02



# EC03

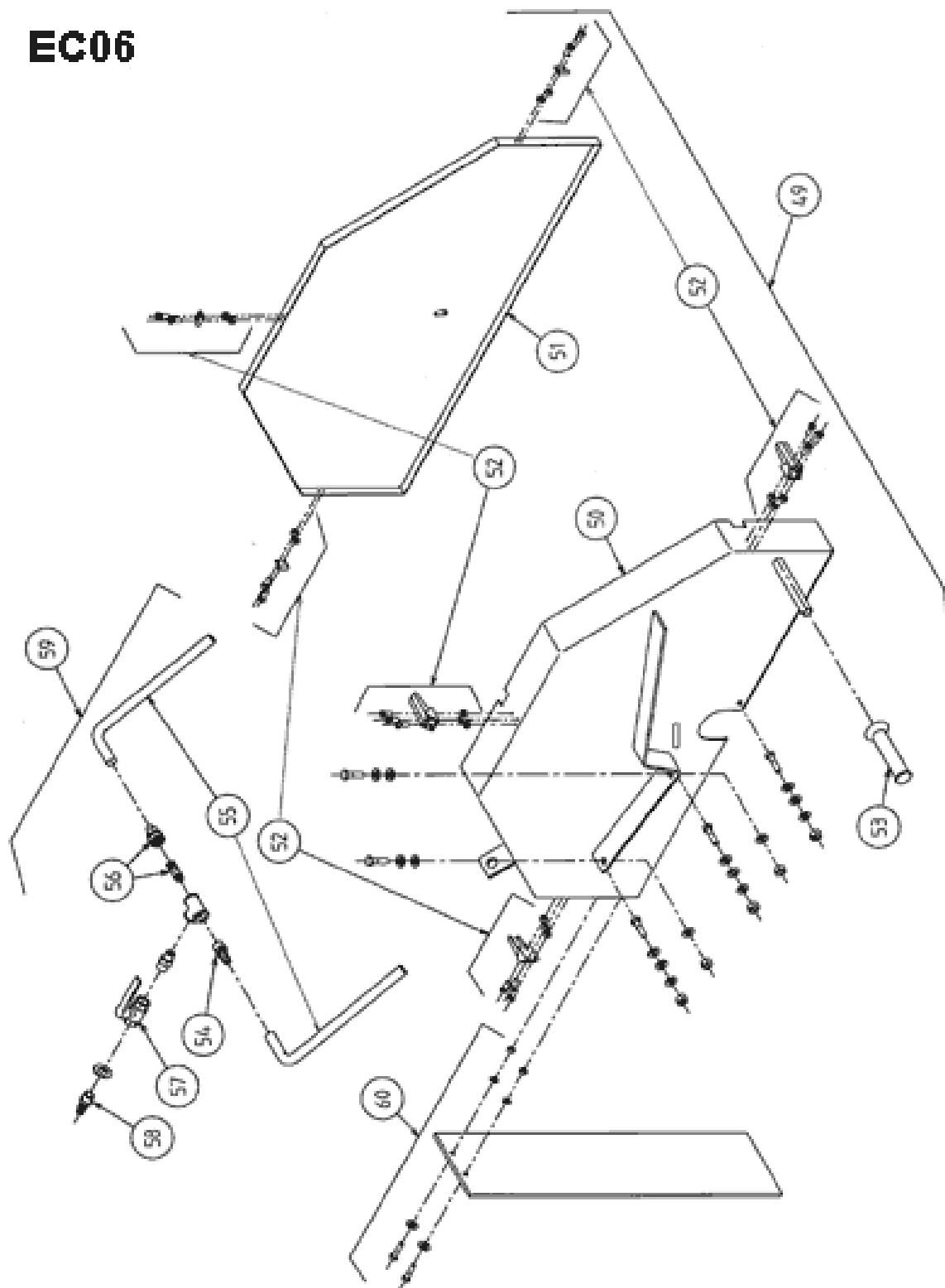


# EC04

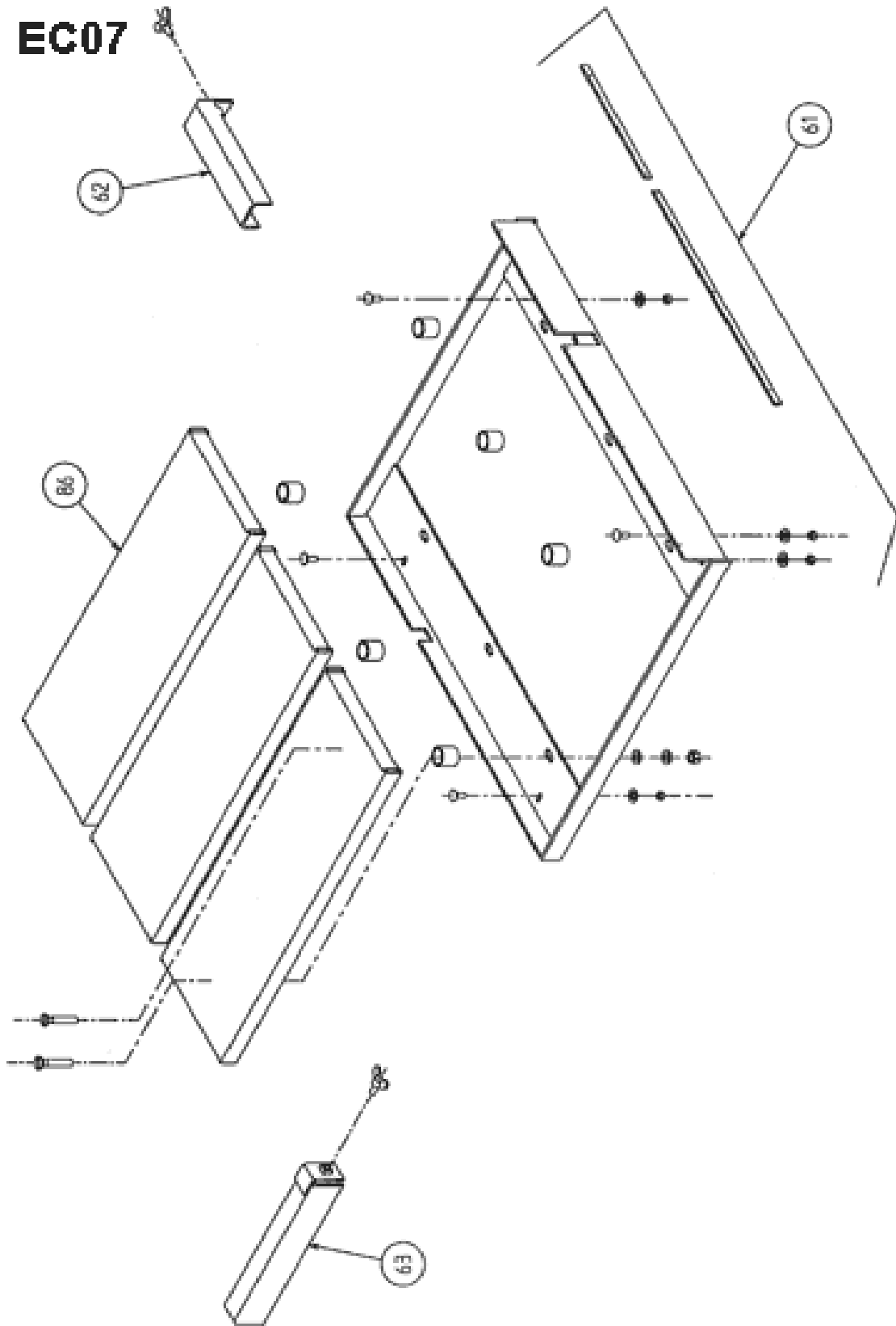




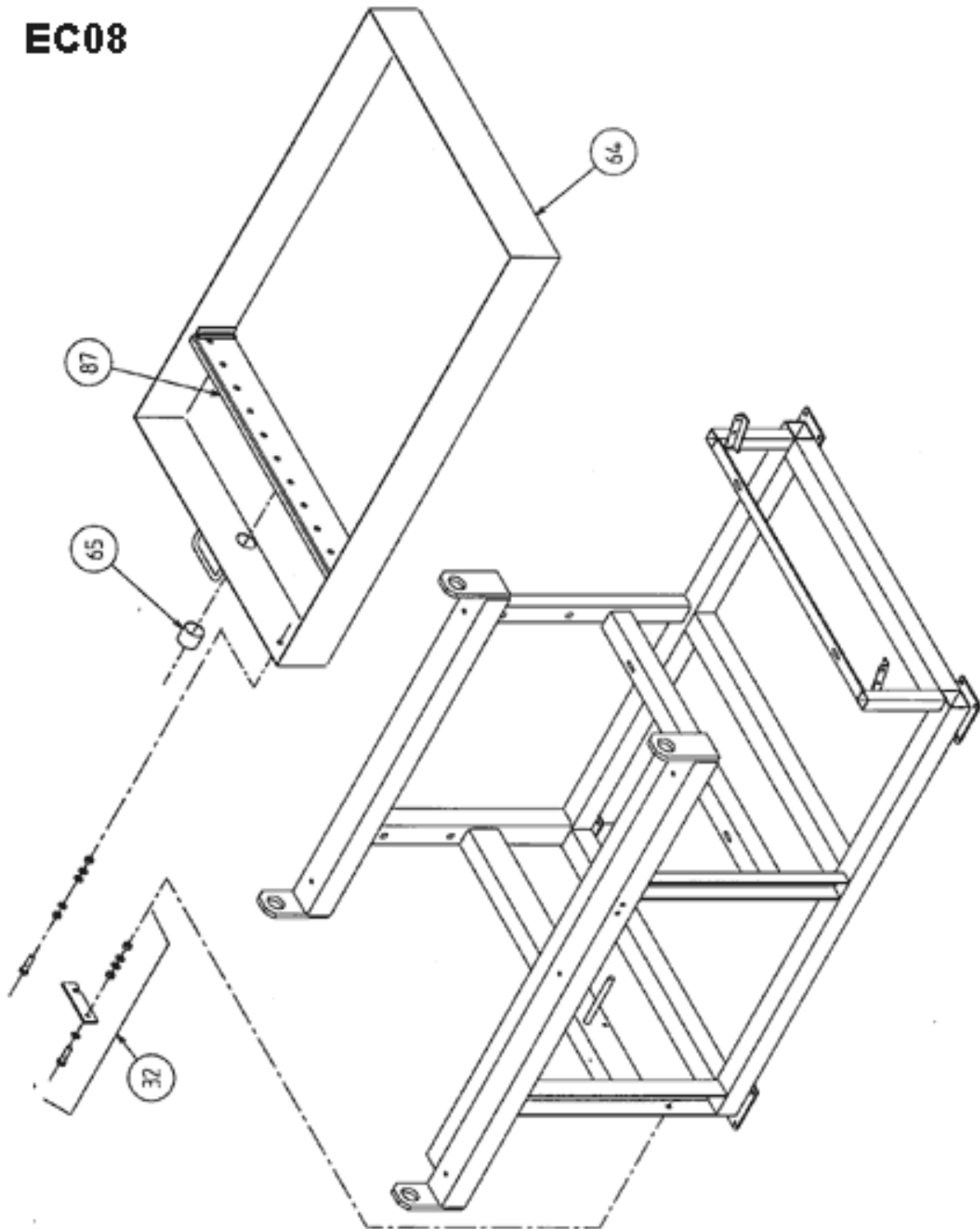
# EC06



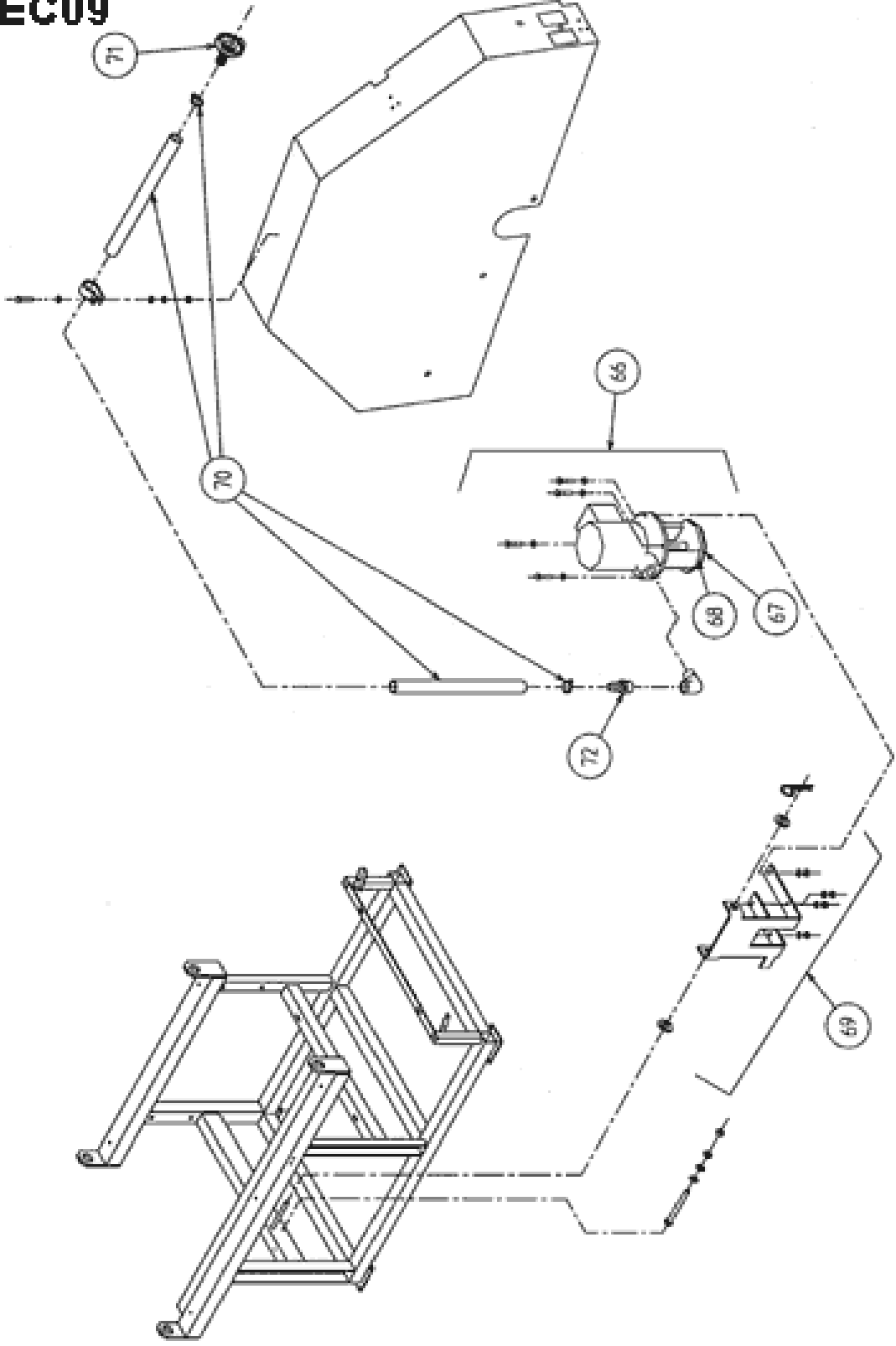
# EC07



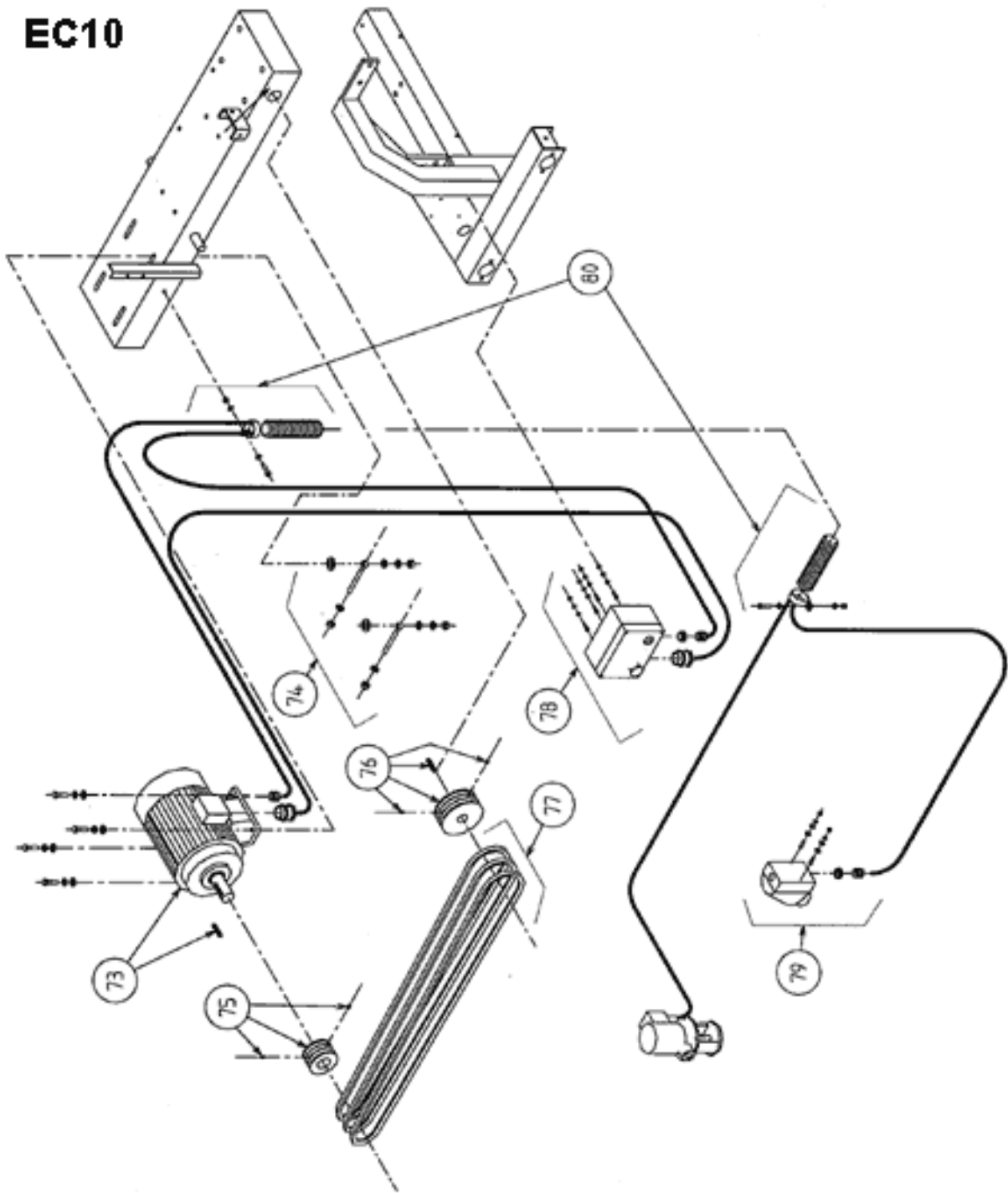
**EC08**



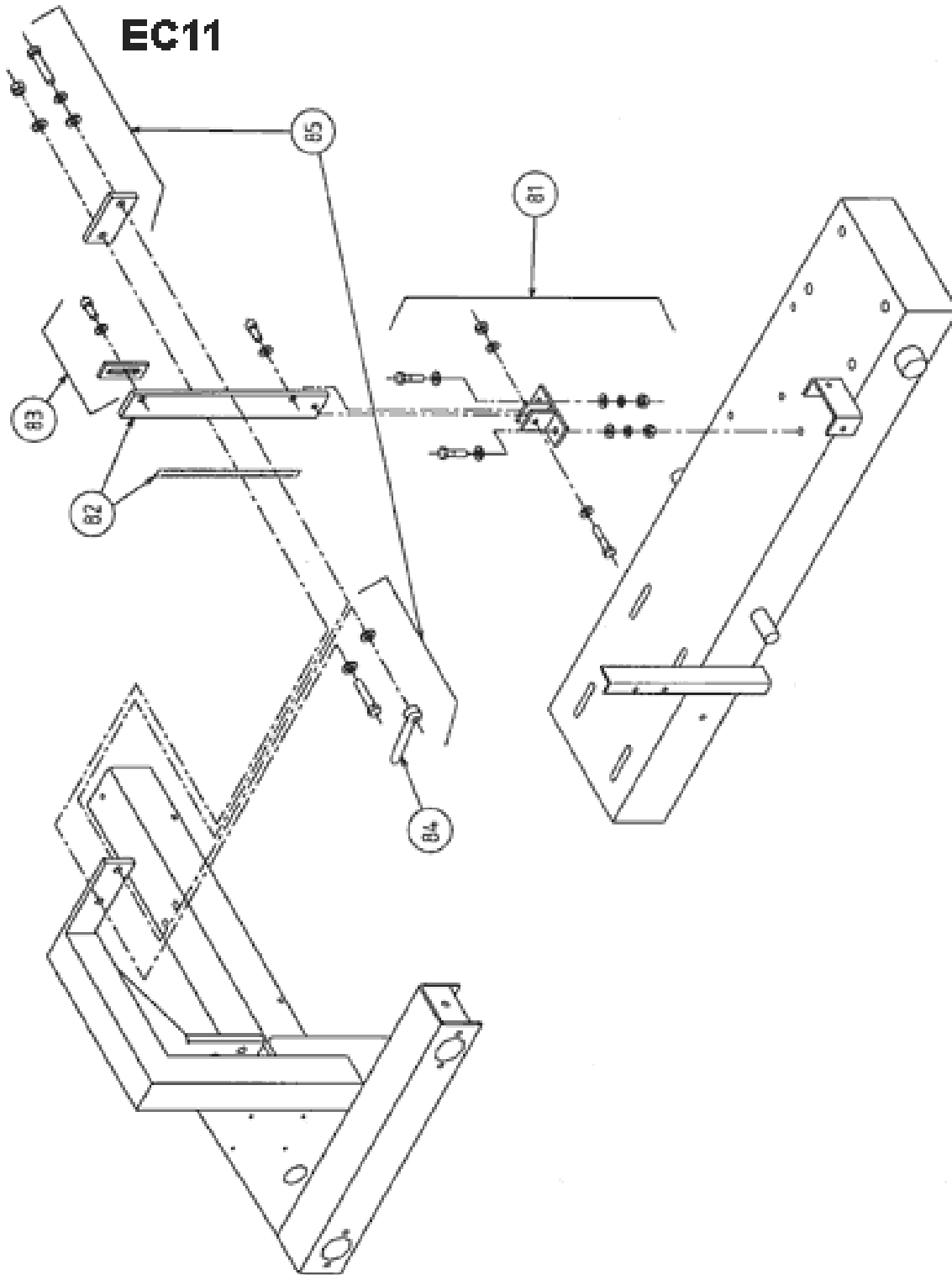
**EC09**



# EC10



# EC11



### 3 Exploded drawings and spare parts list for electrical equipment

#### 3.1 Switch 400V (JUMBO 900 and 1000)

POS.	ART.NUM.	DESCRIPTION
1	00310006622	Main switch
2	00310006618	Star-triangle switch
3	00310006617	Relay
4	00310006616	Overload relay
5	00310007486	Pump thermal protection

#### 3.2 Motor 400V (JUMBO 900 and 1000) and 230V/400V (only JUMBO 900)

POS.	ART.NUM.	DESCRIPTION
1	00310004250	Connecting box
2	00310005894	Connecting plate
3	00310004251	Cooling fan
4	00310006032	Fan cover



SAINT-GOBAIN ABRASIVES

190, Bd. J. F. Kennedy  
L-4930 BASCHARAGE  
LUXEMBOURG

**Tel.: ++352 50401-1**

**Fax: ++352 501633**

e-mail: [sales.nlx@saint-gobain.com](mailto:sales.nlx@saint-gobain.com)

[www.construction.norton.eu](http://www.construction.norton.eu)

**30.09.2008**