



CONSTRUCTION MATERIALS TESTING SOLUTIONS

## VICAMATIC **3**

**Automatic Setting Time Tester**  
for cement, mortar and gypsum

**Standards** EN 196-3 | EN 480-2 | EN 13279-2 | ASTM C191 | ASTM C187 | ASTM C141 | ASTM C451 |  
ASTM C807 | AASHTO T131

# VICAMATIC 3

## Automatic setting time tester for cement, mortar and gypsum

Fully automatic setting time tester with double control mode (local and remote by PC), programmable test procedure, user friendly interface, integrated graphic printer.

Advanced electronics technologies providing superior performances and total flexibility combined with simplicity in use.

Easy setting and storage of user-defined test profiles allowing quick test start.

Automatic determination of initial and final setting time.

Supplied complete with PC software for data processing **VICASOFT-BASIC**.

With PC software **VICASOFT-PREMIUM** (optional) up to 32 independent units (including existing VICAMATIC 2 units) can be connected to a single PC via LAN port and hub.

All units are remotely controlled. Adopting the multi-test network concept laboratory productivity is maximized.

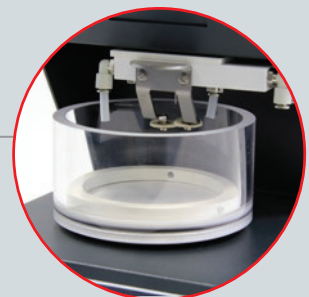
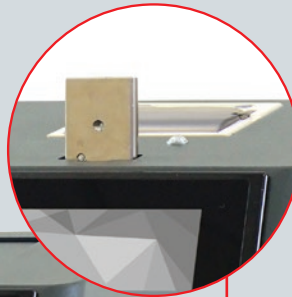
**INTEGRATED GRAPHIC PRINTER** is available as optional accessory showing both results in numerical format and setting time plot.

**Double interface:** local mode, with large size 5.1" high-resolution 800 x 480 pixels, touch screen color display, and remote mode, with PC.

Large accessibility to the test space.

Complete with needle cleaning device.

Practical in-water testing accessory (optional).



**CONTROLS** have long tradition in manufacturing automatic setting time testers for cement and mortar. A new generation, the fourth one, is now available, featuring a large color 5.1" touch screen display. As with the older generations the test procedure is unchanged, a needle (or a probe) drops freely into a cement sample at regular intervals and in fixed positions. Penetration depth is measured by a sensor with 0,1 mm resolution. Along with hardening process development the penetration depth decreases, when it matches some thresholds pre-defined by Standards, initial and final setting times are measured and recorded.

**VICAMATIC 3 features superior functionality and value for the user, for example:**



Easy-to-use interface and software



Large accessibility to the test space



High productivity

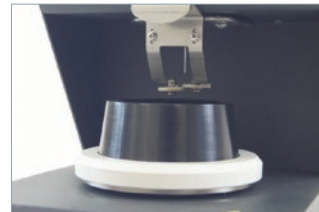


Expandability over time

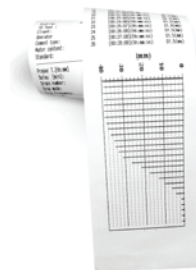
**TOUCH-SCREEN DISPLAY**

The adoption of the latest electronics technologies, including a wide 5.1" color touch screen display, brings great accuracy, reliability and the possibility to create a network with up to 32 independent units (including previous VICAMATIC 2 models) all controlled by a single PC through LAN hubs.

The size and resolution of the touch-screen display provide test menus with advanced functions but easy to navigate, thanks to the use of large icons and graphic symbols.



Detail of the needle cleaning device (included).



A typical plot of a test result obtained with the integrated printer model 65-L2700/E13 including setting time diagram and readings.



Communication ports are positioned on the rear side. LAN port is suitable for connection to PC or to LAN-hub, that creates a network with up to 32 independent units controlled by a single PC. USB port is used for data download to PC and firmware upgrade.



Ergonomic design delivers great functionality and large accessibility to test area.

# Intuitive Smart Software

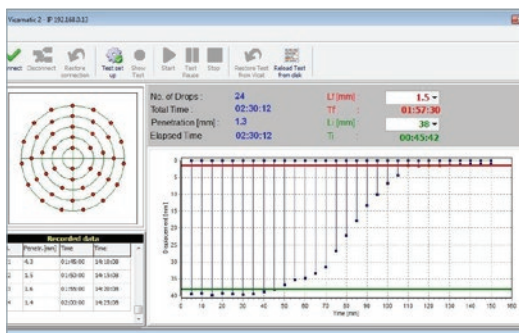
## PC Software VICASOFT-PREMIUM

VICASOFT-PREMIUM software for PC provides connection of up to 32 VICAMATIC-2 and VICAMATIC-3 units including remote control of each unit, data acquisition, processing, filing, and printout of test reports.

Communication is achieved via LAN port (each VICAMATIC unit is supplied complete with LAN cable). The connection of one unit is direct via the PC LAN-port, for more units (up to 32) one or more LAN hubs are required with total number of ports equal (or greater) than the number of units included in the network. LAN hubs are not included.



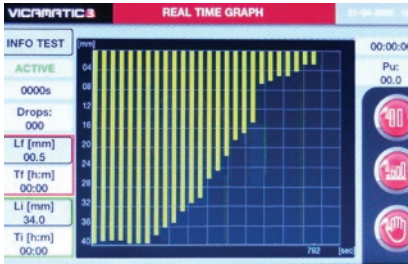
Create a network with up to **32 X** independent units!



Typical setting diagram shown by the VICASOFT-PREMIUM PC software

VICASOFT-PREMIUM, creation of a user defined test profile, easy recallable for future tests

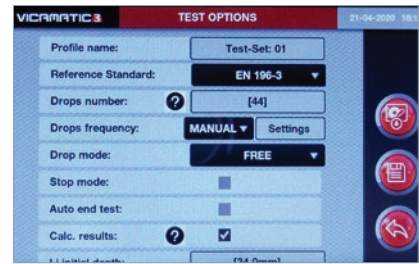
## Display Screenshot



Setting time plot shown in real time on VICAMATIC-3 display

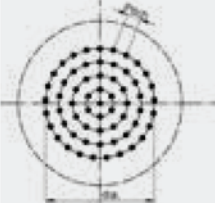






Calibration menu



Typical screenshot of test profile set-up

## Test Paths

Standards	ASTM C191	EN 196	EN 480-2	EN 13279-2	General purpose
Pitch (mm)	6.8	10	10	12	min 2 mm
Diameters (mm)	0 - 10 - 20 - 30 - 40	10 - 20 - 30 - 40 - 50	10 - 30 - 50	0 - 24 - 50	0 ≤ dia ≤ 60 (max 10 diameters)
Points per dia.	1 - 6 - 12 - 18 - 25	2 - 6 - 9 - 12 - 15	2 - 9 - 15	1 - 6 - 13	depending on diameter size
					

## Technical Specifications

5.1", 800 x 480 pixel, 16 M colors, icon-driven touchscreen graphic display, showing data and plots.

LAN port for direct connection to PC of a single unit or connection to a LAN hub for creating a network with up to 32 independent units all controlled by a single PC. 1 LAN cable is included.

USB port for test data download to PC and easy firmware upgrade.

Unlimited storage capacity for test data on internal 16 GB SD card.

Conforms both EN and ASTM/AASHTO test procedures.

Test procedures can be customized and stored to match user-defined requirements.

Can incorporate an integrated graphic printer showing test result and setting time plot.

Large test space with easy accessibility.

Automatic calculation of initial and final setting time at programmable penetration depth limits.

Wide range of accessories including EN and ASTM/AASHTO parts, in-water testing kit, needle cleaning device, integrated printer, probes for testing consistency and gypsum.

**Power:** 50 W

**Dimensions:** 200 x 400 x 410 mm (L x W x H)

# Ordering Information

**63-L2701/E**

VICAMATIC-3, automatic electronic apparatus for setting time test on cement/mortar/gypsum. Complete with EN 196-3 accessories: initial setting time needle 1.13 mm dia., mold and PC software VICASOFT-BASIC.

110-230V, 50-60Hz, 1ph.

**63-L2701/F**

VICAMATIC-3, automatic electronic apparatus for setting time test on cement/mortar/gypsum. Complete with ASTM C191 accessories: initial setting time needle 1.00 mm dia., mold and PC software VICASOFT-BASIC.

110-230V, 50-60Hz, 1ph.

**63-L2701**

VICAMATIC-3, automatic electronic apparatus for setting time test on cement/mortar/gypsum complete with PC software VICASOFT-BASIC. Supplied without accessories and centering ring.

110-230V, 50-60Hz, 1ph.

**SPARE PARTS**

**63-L2700/1**

Centering ring for EN mould.

**63-L2700/2**

Centering ring for ASTM mould.

**63-L2700/E20**

1,13 mm dia. needle for initial setting time test to EN.

**63-L2700/E21**

1 mm dia. needle for setting time test to ASTM/AASHTO.

**63-L0027/E22**

Plastic mould to EN.

**63-L0027/E23**

Plastic mould to ASTM/AASHTO.

**63-L2700/E24**

Glass base plate.

**63-L2700/E25**

Spare base plate for in-water testing kit.



EN and ASTM moulds and needles: 63-L2700/E20, 63-L2700/E21



63-L2700/E22 (on the left)  
63-L2700/E23 (on the right)



63-L2700/E24 (on the left)  
63-L2700/E25 (on the right)

# Accessories

## 82-SW/VS

VICASOFT-PREMIUM PC software for remote control.

## 63-L2700/E11

LAN hub for PC connection of up to 7 units or up to 6 units in case of multi-hub network. LAN cable from hub to PC is included. Each unit is supplied complete with LAN cable.

## 63-L2700/PR

Upgrading of a VICAMATIC unit for incorporating a graphic printer into the head. Test settings and results are plotted both as numerical and graphical format including penetration depth/time diagram. The upgrading shall be factory installed.

## Accessories to ASTM Standards

### 63-L2700/F15

Cylindrical probe and additional weight for consistency test to ASTM C807 and ASTM C187.

### 63-L2700/F15

Cylindrical probe and additional weight for consistency test to ASTM C807.



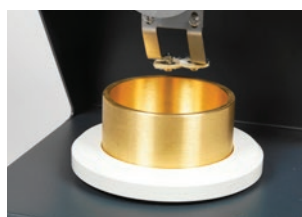
2 mm needle to ASTM C807 (63-L2700/F21) on the left; consistency probe and additional weight to ASTM C807 (63-L2700/F15) on the right

### 63-L2700/F21

2 mm dia. needle to ASTM C807.

### 63-L2700/F23

Brass cylindrical mould to ASTM C807.



Brass mould to ASTM C807 (63-L2700/F23)

## Accessories to EN Standards

### 63-L2700/E10

Accessory for needle cleaning and in-water testing.

### 63-L2700/E9

Water thermostatic unit for up to 2 units. 230 V, 50-60 Hz, 1 ph.



63-L2700/E9

### 63-L2700/E9Z

Water thermostatic unit for up to 2 units. 110 V, 60 Hz, 1 ph.

### 63-L2700/E14

Needle for final setting test to EN 196-3.



EN and ASTM mould and needle: 63-L2700/E14

### 63-L2700/E15

Cylindrical probe for consistency test to EN 196-3 and ASTM C187.

### 63-L2700/E16

Additional weight 700 g to EN 480-2.



63-L2700/E15

### 63-L2700/E18

Conical penetration probe 8 mm dia x 50 mm complete with 100g calibrated weight for gypsum testing to EN 13279.



63-L2700/E18



63-L2700/E16

**In line with its continual program of product research and development, CONTROLS SPA reserves the right to alter specifications to equipment at any time.**

## ▶ CONTROLS Customer Care

**At CONTROLS we are proud of our products.** As one of the longest established manufacturing companies in the world of Construction Materials Testing solutions, we are dedicated to supplying high quality, accurate, affordable, easy to use systems.

As a valued customer of CONTROLS, you will receive continuous, expert support and advice for your equipment. Furthermore, we can offer full installation and training in the correct operation of your CONTROLS equipment.

- ▶ For support from our expert Customer Care Team, contact your local CONTROLS office/distributor or email [customercare@controls-group.com](mailto:customercare@controls-group.com).
- ▶ To order or upgrade your product, please contact our sales department at [sales@controls-group.com](mailto:sales@controls-group.com).

**For more information, please visit [www.controls-group.com](http://www.controls-group.com).**

## ▶ Contact us

[www.controls-group.com](http://www.controls-group.com)



### **CONTROLS Group**

**T** +39 02 92184 1

**F** +39 02 92103 333

**E** [sales@controls-group.com](mailto:sales@controls-group.com)

**www.controls-group.com**

### **Italy** (HEAD OFFICE)

[www.controlsitalia.it](http://www.controlsitalia.it)

### **Mexico**

[www.controls.com.mx](http://www.controls.com.mx)

### **UK**

[www.controlstesting.co.uk](http://www.controlstesting.co.uk)

### **Australia**

[www.controls-group.com](http://www.controls-group.com)

### **Poland**

[www.controls.pl](http://www.controls.pl)

### **USA**

[www.controls-usa.com](http://www.controls-usa.com)

### **France**

[www.controls.fr](http://www.controls.fr)

### **Spain**

[www.controls.es](http://www.controls.es)