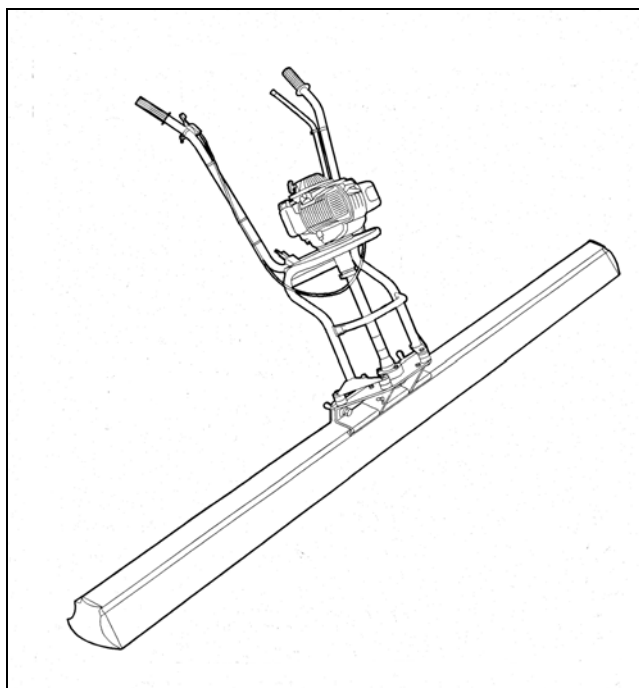


OPERATION MANUAL AND PART LIST

VIBRATING BULLFLOAT TYPE DUOSCREEN

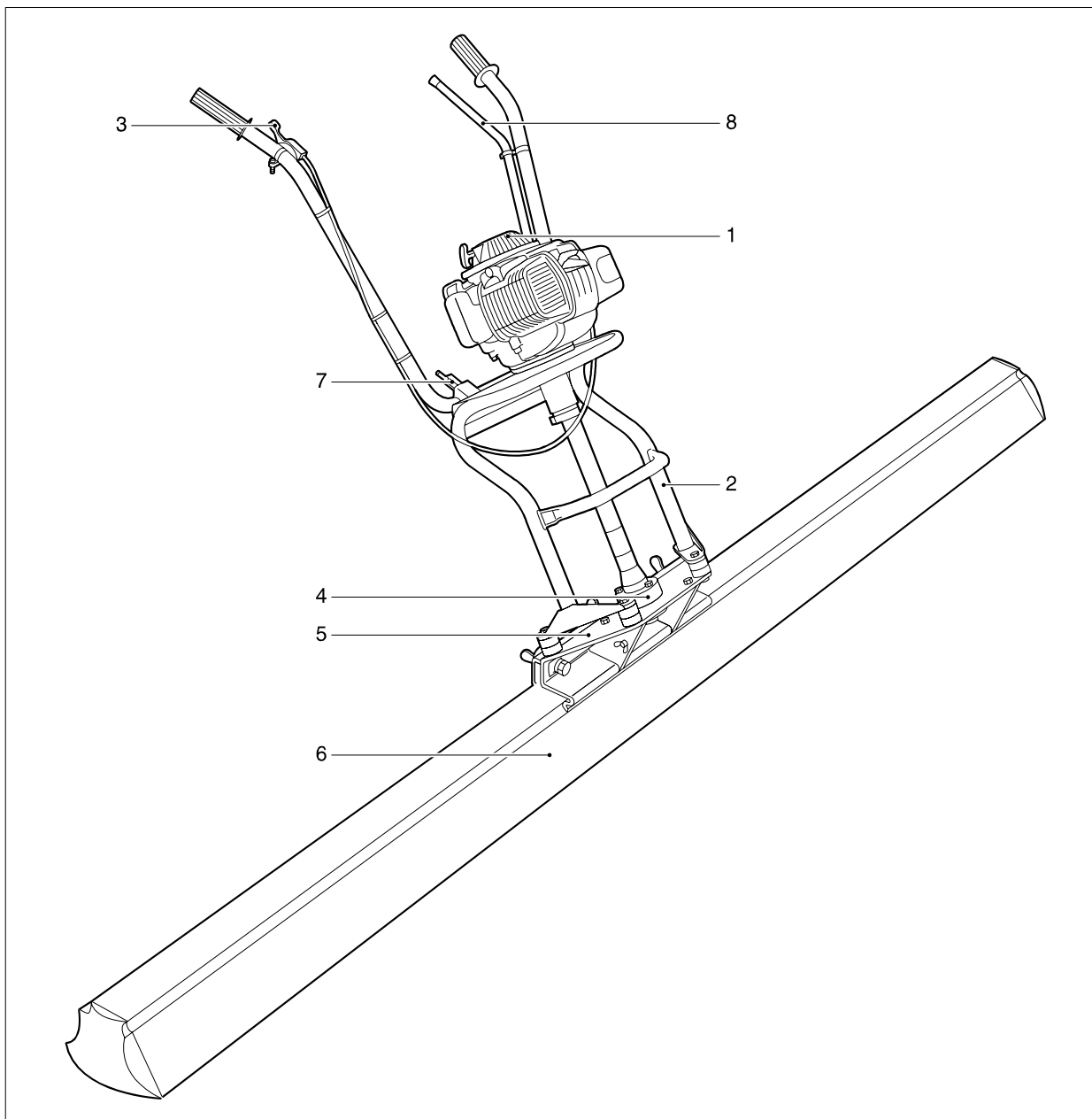


Lievers B.V. Holland

Postbus 103
3640 AC Mijdrecht
tel: +31 (0)297-231900
fax: +31 (0)297-231909
e-mail: info@lieversholland.nl
www.lieversholland.nl

© Copyright 4-2-2005, Lievers B.V. Holland





ill. 002

Figure 1 View of the most important components

- | | | |
|---------------------|----------------------------|------------------------------------|
| 1. Petrol engine | 4. Vibrator | 7. Lock, adjustable control handle |
| 2. Operating handle | 5. Quick disconnect system | 8. Support |
| 3. Throttle + cable | 6. Alum. blade | |

© Bouwmachinefabriek Lievers B.V. NL 1999.

All rights are reserved. Reprints, copies, adaptations for new editions and publications in any form or through any media, including abstract forms are not permitted unless written permissions is first obtained from Bouwmachinefabriek Lievers B.V.

Bouwmachinefabriek Lievers B.V. may not be held responsible for any guarantees or liabilities for the contents of this publication and points to, in this case, all implied securities for suitability of merchantability or any other purposes. Bouwmachinefabriek Lievers B.V. further retains the right to revise this publication and to alter the contents over certain periods of time, without the obligation to report such alterations and changes first.

Bouwmachinefabriek Lievers B.V.
P.O. Box 103
3640 AC Mijdrecht
The Netherlands

Telephone +31 297 23 1900
Telefax +31 297 23 1909

Website: www.lieversholland.nl
E-mail: info@lieversholland.nl

Edition 1.0
Bouwmachinefabriek Lievers B.V.
Construction file (CE) nr. DuoScreed 039

DUOSCREED Operation manual

Contents

I How to use this manual

II Safety aspects

1 INTRODUCTION

1.1 What is a DuoScreed?

1.2 Technical data

2 OPERATION INSTRUCTIONS

2.1 How to assemble the DuoScreed

2.2 Operation and application of the DuoScreed (Petrol engine version)

3 TROUBLE SHOOTING

4 MAINTENANCE AND REPAIR

4.1 Maintenance

4.2 Cleaning and servicing of the DuoScreed with Petrol engine.

4.3 Spare parts

5 ENVIRONMENT

5.1 Safe disposal

5.2 Construction material

6 GUARANTEE

6.1 Guarantee provisions

6.2 Guarantee certificate

C.1 EC Declaration of agreement for machinery

A. I Product specifications

A.2 Review of the stickers

DUOSCREED Operation manual

I How to use this manual

This manual has been written to help you operate and service the DuoScreed safely. This manual is intended for dealers and operators of the DuoScreed.

The manual is divided into six chapters, so that you can easily find the information you require.

The position and description of the most important parts of the DuoScreed can be found on the backside of the cover.

FOREWORD

- 1 The introduction gives information about the DuoScreed and describes how you can safely operate the DuoScreed.
- 2 Operation instructions, instruct you how you must use the DuoScreed.
- 3 Trouble-shooting, contains a list of malfunctions which helps you to locate problems and how to solve them.
- 4 Maintenance and repair, give information about how to service the DuoScreed and how to order spare parts.
- 5 Environment, gives instructions on how to handle the recycling of the discarded apparatus in an environmentally friendly way.
- 6 Guarantee, consists of guarantee provisions and the guarantee certificate.
- 7 Registers, contain a numbered list of all figures and tables.

Directives with regard to the notations.

Text in this manual to which special attention must be paid are shown in the following way:

TIP: Gives the operator suggestions and advice as to how to carry out a certain procedure easier or in a handier way.
--

ATTENTION: A remark with supplementary information, which brings possible problems to the operator's attention.
--

CAREFUL: The product can be at risk. The DuoScreed will be damaged if procedures are not carried out in the correct way.

WARNING: Injury to the operator or damage to the DuoScreed. The procedures must be carried out correctly and carefully.
--

DANGER : The life of the operator can be at risk.
--

Suggestions to improve the DuoScreed and/or this manual are very welcome.

Please send them to:

Bouwmachinefabriek Lievers b.v.

Postbox 103, 3640 AC Mijdrecht, The Netherlands

|| GENERAL SAFETY-ASPECTS

All Lievers equipment have been tested in accordance with the strict international safety standards. This section contains general advice and apply to several machines mentioned in this paragraph.

- Ensure that you are qualified (familiar with the contents of this manual), to operate and carry out light maintenance-work to the machine when you are operating the machine for the first time.
- Wear safety shoes with extra protection (steel caps and anti-slip soles)
- Wear a safety helmet, safety glasses, working gloves, which do not conduct electricity and protective clothing.
- Ensure, that all symbols on the machine, can always be clearly read.
- Do not leave any tools or parts lying around on the work floor, as this can cause accidents.
- Watch where you are going, the ground can be slippery.
- Take care that you do not injure yourself on objects, such as scaffolding and reinforcement materials, which can be found directly or indirectly in the working area.
- Be careful when lifting and carrying the DuoScreed. Do not bend forwards when picking up the apparatus, but bend your knees. Ensure that the working area is within your reach, so that you do not have to bend forward.
- When cleaning the machine, ensure that no water or cleaning detergents get into the motor housing.
- When the machine is not being used for longer periods of time, then it must be stored in a dry and clean area.
- Do not only pay attention to your own safety, but also to that of your colleagues.
Regular maintenance of the machine promotes safe operation.

The following safety-aspects specifically apply to those Lievers products which are equipped with a petrol-engine.

- Do not use the DuoScreed with petrol-engine indoors or in poorly ventilated places, such as pits etc.
- Make sure that there is sufficient ventilation in spaces which are surrounded by walls. Never inhale exhaust gasses, they can damage your health and that of your colleagues.
- To avoid getting an electric shock, do not touch the high-tension cable or spark plug cap while the engine is running.
- Check for fuel leaks before running the machine.
- Do wear working-gloves, safety glasses and protecting clothing during refueling.
- Make sure that there is sufficient ventilation during refueling.
- Refueling of fuel is only allowed after the engine has been cooled off sufficiently.
- Refueling of fuel, while the engine is hot, might lead to a very dangerous situation.

DUOSCREED Operation manual

It is strictly forbidden to refuel :

- * in the direct vicinity of open fire or other flammable materials,
- * while smoking cigarettes etc.
- * in explosion endangered spaces.

Explanation of the used safety symbols



Figure 2 Safety symbols

- 1 Read the instructionbook.
- 2 Safety glasses, safety helmet and ear protection compulsory.
- 3 Working gloves compulsory.
- 4 Safety shoes with extra protection compulsory.
- 5 Inflammable material.
- 6 Be carefull

TIP: If the safety aspects are not clear to you, then please contact the manufacturer for further information.

Manufacturer:

Lievers Holland

Department: service

Telephone: + 31 297 231900

Telefax: + 31 297 231909

1 INTRODUCTION

This manual has been written to help you operate and service the DuoScreed safely. This manual is intended for dealers and operators of the DuoScreed.

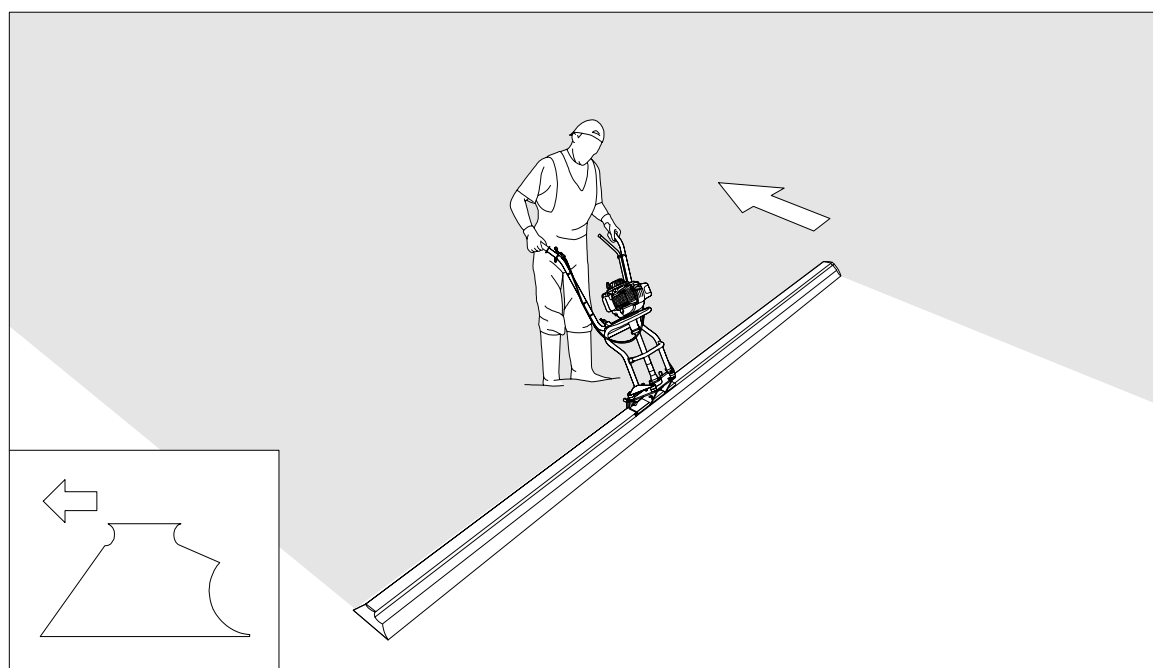
1.1 WHAT IS A DUOSCREED ?

The DuoScreed uses a unique reversible blade design which can be used for standard form-to-form screeding or wet screeding. It is supplied in 2 components: the blade profile and the power unit. The power-unit consists of a twin handle between which the petrol engine is located. The engine drives, by means of a flexible shaft, the vibrator which is adjustable in 4 positions. The power-unit is equipped with a quick disconnect system, which allows attachment of various blade widths within minutes. With the vibrating alu. profile of the DuoScreed the toplayer of freshly poured concrete is compacted, leveled and smoothed in one operation.

The drive-unit of the DuoScreed (Petrol engine) is started by pulling the recoil-starter of the engine. The vibrating blade of the DuoScreed compacts, levels and smoothens freshly poured concrete in one operation.

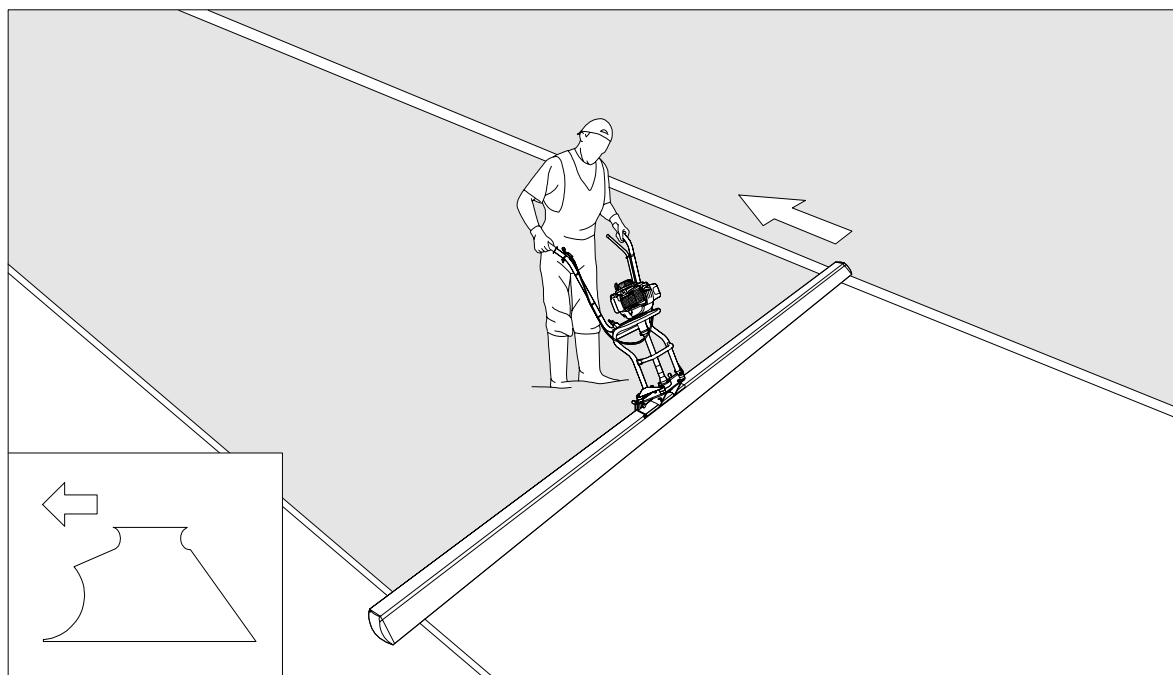
The DuoScreed features a dualpurpose blade and can be used for form-to-form screeding or for wet screeding.

By rotating the power-unit 180 degrees the operator can choose between screeding, using forms/rails, or wet screeding (see figures 3 and 4)



ill. 004

Figure 3 The DuoScreed in action as a wet screeder (wet screeding side in direction of arrow)



ill. 003

Figure 4 The DuoScreed in action as a form to form screeder (cutting side in direction of arrow)

1.2 TECHNICAL DATA

Technical data DuoScreed (see also the type plate in the annexe.)

Type	Alu blade length	Drive unit	Capacity	Weight drive unit
DuoScreed Standard	1,5 – 1,9 – 2,5 – 3,0 – 3,75 – 4,25 – 5,0 – 5,5* – 6,0* m	Honda GX- 35 – 4 stroke, App. 5.500 rpm, flexible shaft drive	1,2 kW/1,6 HP	App. 12 kg
DuoScreed Light Weight (LW)	1,54 – 1,83 – 2,44 – 3,05 – 3,66 – 4,27 – 4,88 m			

Table 1 Type of DuoScreeds

* Use 2 vibrating units when working with 5,5 (18ft) and 6 mtr. (20ft) blades.

=====

Sealing : IP 54, splashproof
 Execution : portable
 Dimensions : depending on the execution
 Fuel : Euro unleaded (no fuelmix).

2 Operation instructions

This chapter describes how to use the complete range of DuoScreeds.

Tip: For the location and description of the DuoScreed's parts, which are mentioned in the text, we refer to the illustration figure 1 on the backside of the cover.

2.1 How to assemble the DuoScreed.

Careful: Read the safety aspects and instructions before using the DuoScreed.

1. First determine whether you want to use the DuoScreed as a form-to-form screeder or as a wet screeder.
2. The DuoScreed is supplied in 2 components: the power-unit and the blade profile.
3. The power-unit is equipped with a quick disconnect system, with which the power-unit can be mounted onto the blade profile.
4. To connect the power-unit to the blade profile loosen the 3 wingbolts about 8mm. until the front clamping plate no. 3 fits into the collar of the profile. (see figure 5).
Now tighten the 3 wingbolts no.2

Careful: Make sure that the unit is mounted between the 2 indication arrows, located on the blade

5. Now unfold the twin control handle, adjust it to the proper height, and tighten the 2 clamps.
6. Make sure that the DuoScreed is properly assembled and that the ON-OFF switch is in the ON position.
7. Make sure that the fuel tank is filled. (NO FUEL MIX!!)
8. In case the DuoScreed is used for form-to-form screeding make sure that the rail supports are set to the right level.

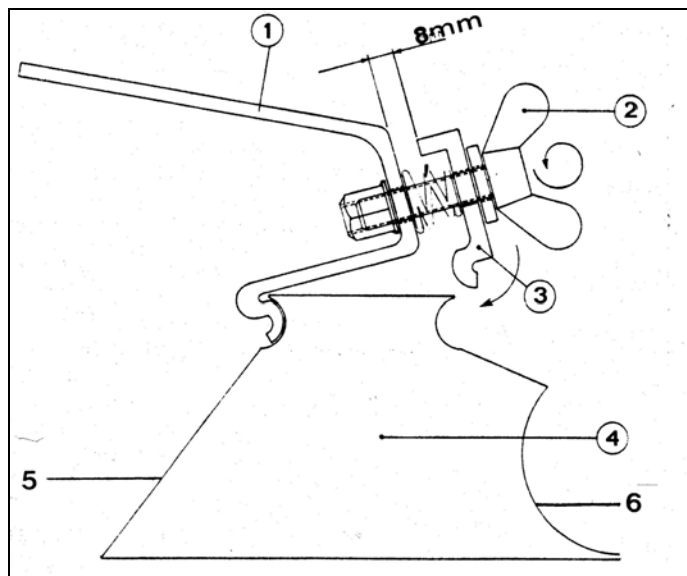


Figure 5 Quick-disconnect system.

- | | |
|--------------------------|------------------------------|
| 1. Big retainer plate, | 5. Wet screed side, |
| 2. Wingbolt, | 6. Form-to-form screed side. |
| 3. Small retainer plate, | |
| 4. Blade profile. | |

2.2 Operation and use of the DuoScreed

- A. Place the DuoScreed profile on the rail supports or in case you want to use the DuoScreed as a wet screed, directly on the freshly poured concrete surface.

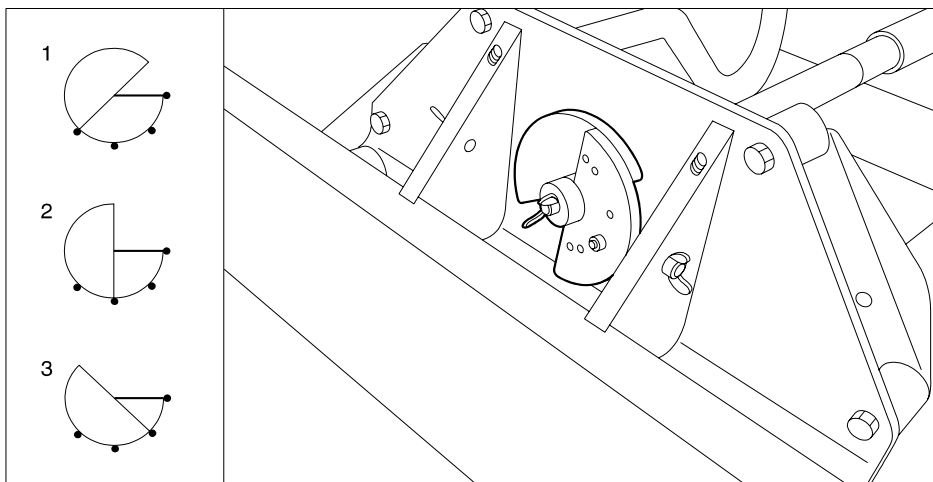
Careful: before starting the petrol engine read the enclosed operation instructions carefully.

Make sure before starting that the ON-OFF switch is in the ON position!

- B. Now start the engine and allow a three minute warming-up period before setting the throttle handle to the desired engine speed.
- C. After setting the engine speed start moving the DuoScreed backwards, the travelspeed depends on the consistency of the concrete.
- D. If the DuoScreed vibrates too strong the centrifugal force needs to be reduced. This is done by first removing the vibrator's protection cover and adjust the excentrical weights to a lower centrifugal force. (See figure 6) A well adjusted screeder will create a level, smooth and shining surface.
- E. After the job is finished, remove the DuoScreed from the concrete lane and switch off the petrol engine.
- D. After use, clean the DuoScreed according to the instructions described in chapter 4 of this manual. Place the DuoScreed on a dry, clean and stable surface.
- F. If you do not expect to use the engine for a long period of time, drain the fuel tank with fuel and let the engine run at idle speed until the fuel in the carburator is used and the engine stops.

Please observe the following instructions:

1. make sure to refill the fuel tank in time. Do not let the engine run until all the fuel is used. This might cause starting problems.
2. prevent the DuoScreed of sinking into the concrete. After the engine has been switched on, immediately move the DuoScreed backwards.
3. When using a low slump concrete, move the DuoScreed slowly across the surface of the concrete. When using a high slump concrete, move the DuoScreed faster across the surface of the concrete.
4. In case the DuoScreed is used as a wet screed it is recommended to first compact the freshly poured concrete with a poker vibrator while at the same time set the height of the floor by means of a laser device.



III. 006

Figure 6 Various positions of the vibrator.

How to adjust the centrifugal force: CAREFULLY: SWITCH OFF ENGINE FIRST.

1. Remove the protecting cover of the vibrator by loosening the springknob.
2. Now loosen the wingbolt of the vibrator and adjust the vibrator in accordance with the indicated positions in the drawing. Retighten the wingbolt and refix the protection cover.

3.0 Trouble shooting

If the DuoScreed is not operating properly then one or more of the following problems could be the cause.

Problem:The DuoScreed, used as a form-to-form screeder, vibrates too powerful and does not travel smoothly across the rail supports..

Cause:

The vibrator vibrates too strong for the choosen working width and lies therefore very unstable on the rail support system and thus cannot travel and function in the proper way.

Solution:

Remove the protection cover of the vibrator and adjust the excentrical weights in accordance with the setting range indicated by the manufacturer. (see figure 7)

NOTE:When using a gasoline type of DuoScreed you can adjust the revolutions and centrifugal force by reducing or increasing the motorspeed to suit the required vibrations and beamwidth.

Setting range of the vibrator.

For light weight blades (LW), always use position1!

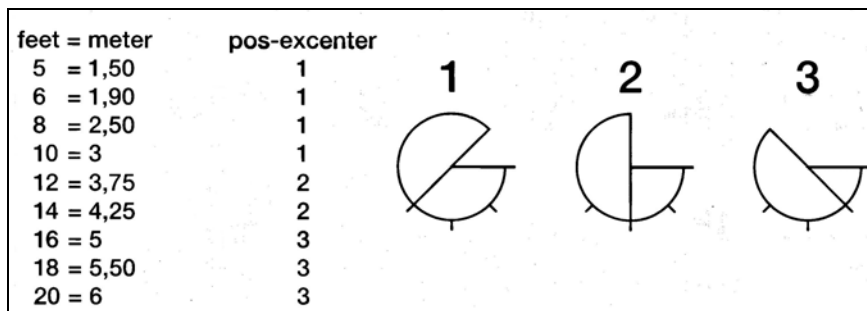


Figure 7 various setting positions of the vibrator

How to adjust the centrifugal force: CAREFULL: SWITCH OFF ENGINE FIRST!!

- 1.Remove the protection cover of the vibrator by pressing the springknob.
- 2.Now loosen the wingbolt of the vibrator and adjust the excentrical weights in accordance with the indicated positions in the drawing. Retighten the wingbolt and replace the protection cover.

Problem:The DuoScreed vibrates insufficient and as a result the concrete floor cannot be leveled and smoothend in the proper way.

Cause:

The centrifugal force of the vibrator is set too low.

There is an excess of concrete in front of the leading edge.

The choosen width of the profile is too big.

Solution:

Increase the centrifugal force of the vibrator, (see figure 6 adjusting the centrifugal.force).

NOTE:In the event you are using a DuoScreed with a petrol engine you can increase the centrifugal force by increasing the revolutions of the gasoline engine (full throttle).

Make sure to maintain a roll of concrete of 20 to 30mm evenly spread out along the front of the leading beam.

Choose a smaller profile width.

Problem: The DuoScreed type with Petrol engine fails to start or runs irregularly.

Cause:

Insufficient fuel in the fuel tank,

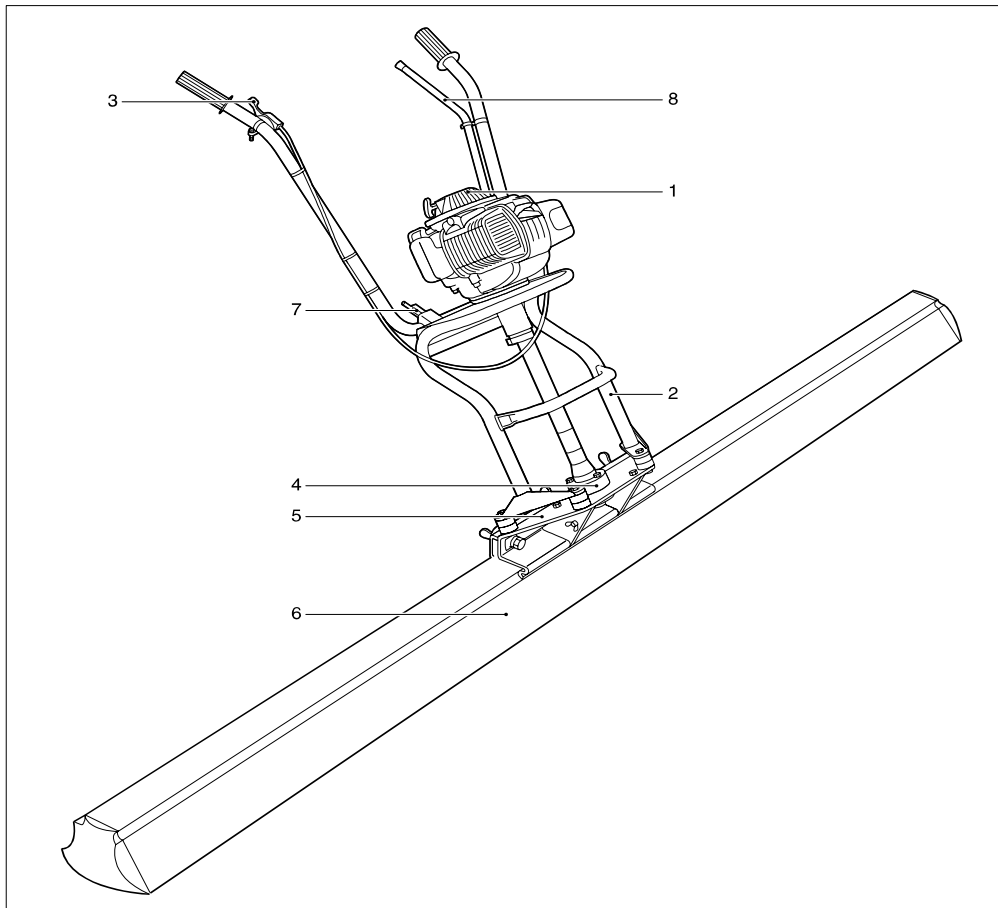
The starting procedure was not executed in the proper way.

A failure in the gasoline engine.

Solution:

Refill the fuel tank,

Read the operation instructions of the gasoline engine carefully and repeat the starting procedure.



ill. 002

1. Petrol engine. 2. Operation handle. 3. Gas throttle + cable. 4. Vibrator.

5. Quick disconnect system. 6. Alloy blade. 7. Lock for adjusting the operating handle.

8. Support

Tip: Please contact Bouwmachinefabriek Lievers B.V. if problems occur which are not mentioned in the list, or if a mentioned problem is not solved by the solutions in the list

Lievers B.V. P.O.Box 103, 3640 AC Mijdrecht The Netherlands.

Tel.: +31 297 231900 Fax.: +31 297 231909

4 Maintenance and repair

4.1 Maintenance

Although the DuoScreed has a few moving parts, regular maintenance promotes a long and trouble-free life.

- A. It is recommended to spray the aluminum profile and quick disconnect prior to operation, with a high quality form oil. (See figure 7.0)
- B. Clean the quick disconnect and blade on a daily basis.
- C. Only qualified personnel, familiar with the contents of this operation manual, are allowed to carry out maintenance and repair jobs to the DuoScreed.
- D. After use store the DuoScreed in a clean, dry and dustfree place.

Attention: concrete remnants could damage the quick disconnector. Remove concrete remnants from the blade and connector before they harden out. They could easily injure the operator.

Warning!: Do not clean the DuoScreed with a high pressure cleaner.

4.2 Cleaning and servicing of the DuoScreed with Petrol engine.

Daily service:

In order to achieve a maximum cooling effect the ventilation openings must stay free from dirt, grease and concrete. Check them at the end of each working day. If necessary clean them with a brush or a damp cloth.

TIP: For detailed servicing instructions please read the operation instructionssupplied by the manufacturer of the Honda petrol engine.

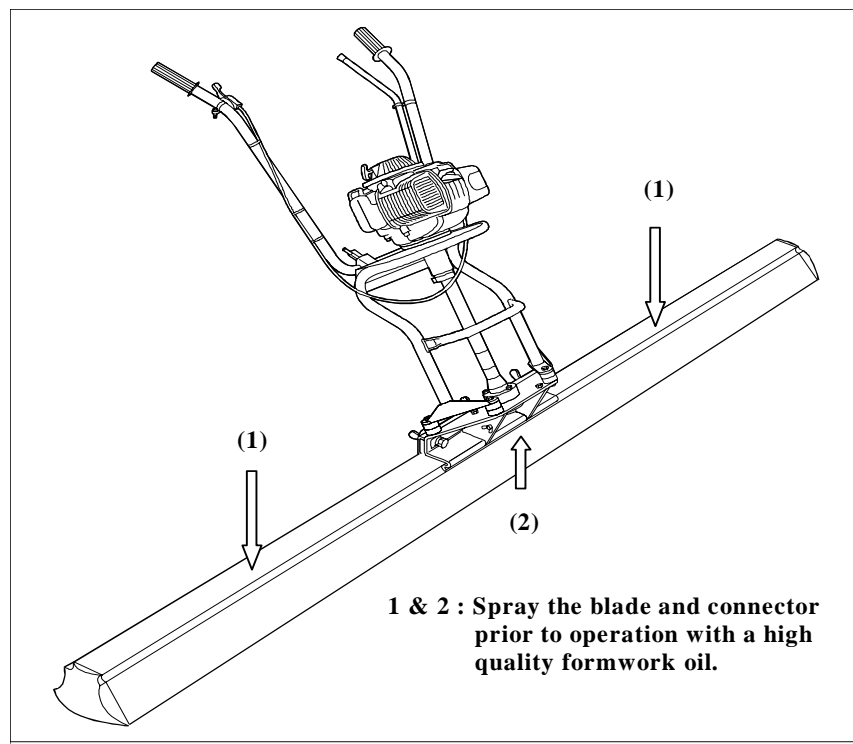


Figure 7.0 Blade and connector to be sprayed with formwork oil.

4.3 Spare parts

It is not strictly necessary to keep spare parts on stock. However, if you want to keep certain spares on stock then please contact the manufacturer / dealer for advise.

Tip: When ordering parts, fill in the order form accurately.

When ordering parts please state the following information:

- Type of DuoScreed.
- Year of construction.
- Order number plus description of the part.
- The required quantity.
- The dispatch address and dispatch mode.

Lievers B.V. declines all responsibility for the supply of incorrect spares due to incomplete or unclear requests.

5 ENVIRONMENT

5.1 Safe disposal

Instructions for the protection of the environment.

The old machine contains valuable materials. Take the discarded apparatus and accessories to the nearest official collection point.

5.2 Construction material

The machine is manufactured from the following materials:

location	Material
Twin handle control	steel
Hoseconnectors	„
Excentrical weights	„
Flexible shaft	steel
Various parts	„ & Aluminium
Alum. profile	aluminium
Endcovers profile	synthetic material
Housing petrol engine	aluminium
Engine covers	synthetic material
Fuel tank	„ „
Rubber silent blocks	rubber
Handles	„
Hose	rubber

Table 5.0 used construction material

6 GUARANTEE

6.1 Guarantee provision

All damages to parts of the DuoScreed which occur within 12 months from the date of purchase and are recognized as possessing manufacturing defects, will be replaced by the manufacturer as soon as possible.

The manufacturer declines all responsibility for damages caused by misuse, incorrect connections, improper installation and maintenance and alterations that have been carried out to the DuoScreed.

Guarantee is not applicable either if:

- the ventilation slots are not cleaned regularly,
- unqualified personnel (not familiar with the contents of this operation manual) have assembled or dismantled the DuoScreed.
- original Lievers parts have not been assembled,
- the DuoScreed has been stored in a damp environment.
- the DuoScreed has been cleaned with a high pressure cleaner or by water jet under high pressure.
- the guarantee is valid for 12 months from the date of purchase.

6.2 Guarantee-certificate

Vibrating bullfloat Type DuoScreed, Nr.....

Purchase date :.....

Manufacturer:

Bouwmachinefabriek Lievers B.V.

Address: Groot Mijdrechtstraat 68, Mijdrecht, The Netherlands.

C.1 EC-Declaration

EC-Declaration of agreement for machinery
(Directive 98/37/EC, Annexe II, under A)

Manufacturer: Bouwmachinefabriek Lievers B.V.

Address: Groot Mijdrechtstraat 68, Mijdrecht, The Netherlands

Hereby declares that:

The vibrating bullfloat type : DuoScreed

complies with the regulations for the Machine Directive (No. 98/37/EC, as lastly modified).

Complies with the following harmonized standards:

NEN-EN 292-1; NEN-EN 292-2 ; NEN - EN 60335-1 ; NEN - EN 6055-2,
EN 55014 and EN 60402

Done in Mijdrecht, 1 May 2004

Signature:



Mr. J.F.Lievers

A.1 Product specifications

System process	concrete compaction, smoothing and leveling.
Process	Generating mechanical vibrations via petrol-engine.
Noise production	In open air max. 50 dB (A)
Vibr.acceleration XX	5,39 m/s ² ISO 5349
Maintenance	Cleaner; water (brush)
Power consumption	See technical specifications
Working area	<ul style="list-style-type: none"> • Portable execution .Total incl.alu.frame max.:600 x 45 x 100 cms.cms
System mass	Operation unit with petrol engine: 12 kg. Alu.profile standard: 4,6 kg. per meter. Alu. profile LW: 3,0 kg per meter.

Table A.1 Productspecification

XX Comfort exposure 1,7 hr a day, MAX 6,9 hr a day according ISO 5349

A.2 Review of the stickers



Figure A.2 Review of the stickers

DuoScreed with Honda petrol engine

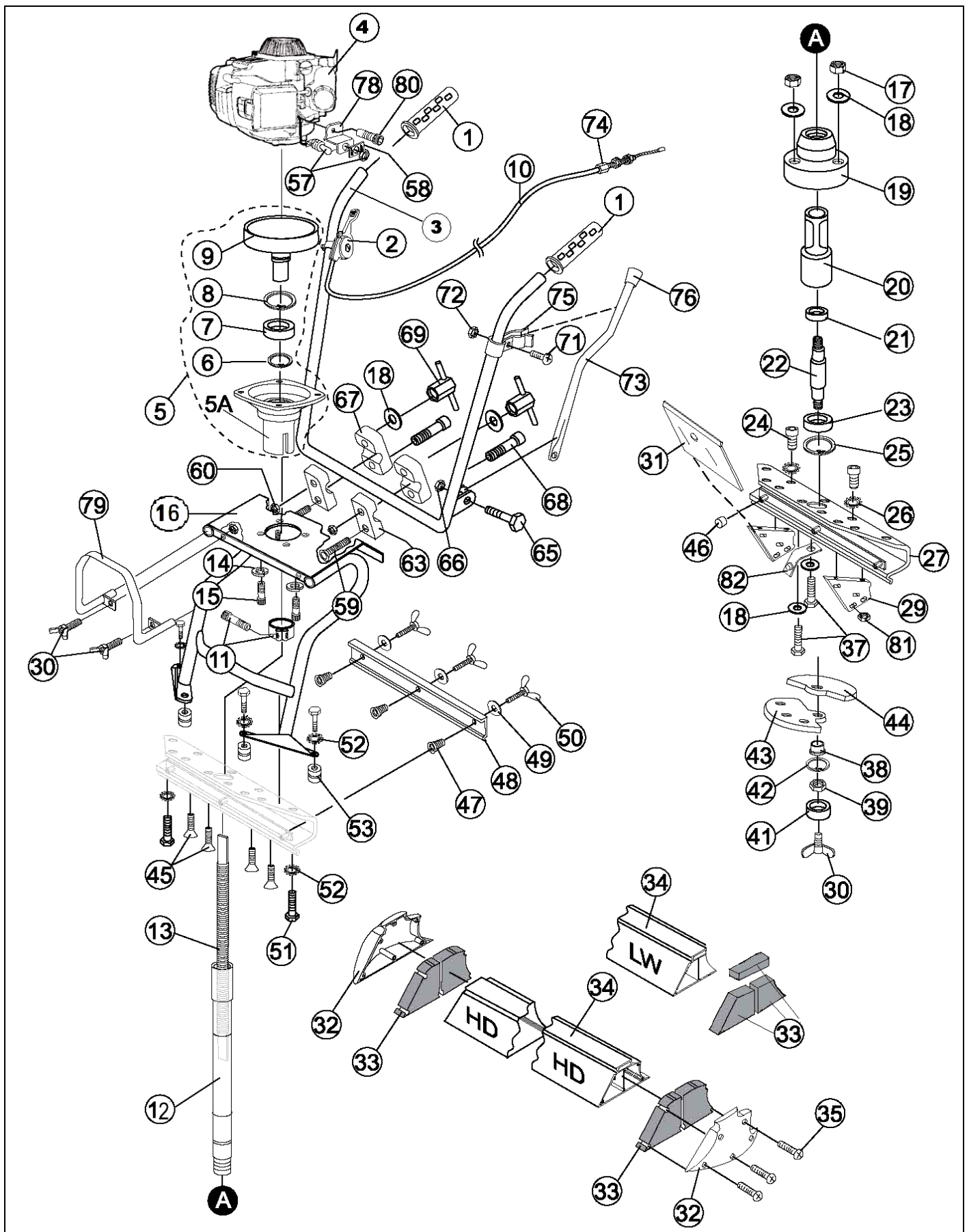


Figure 8 Exploded view of DuoScreed with Honda petrol engine

DuoScreed Power-unit with Honda Petrol engine

Ref.	Part.no	Qty.	Description
1	2648	2	Handle grip
2	2647	1	Throttle handle
3	2633LW	1	Upper operating handle
4	2640A35	1	Engine Honda GX 35 S.E.T.
5	2641	1	Centrifugal clutch housing compl. (excl. clamp 11)
5A	2641los	1	Centrifugal clutch housing with Alu.ring
6	0201	1	Retaining ring 17x1mm. in centrif.housing
7	2642C	1	Bearing in centrifugal housing
8	0205	1	Retaining ring (big)
9	2642	1	Centrifugal drum
10	2645LW	1	Throttle Asm. Cable 87 cms.
11	2626	1	Clamp for centrifugal housing
12	2625LW	1	Rubber hose with connectors
13	2621LW	1	Flexible shaft
14	0178	4	Spring washer M6 Type B
15	0165	4	Socket head bolt M6x25
16	2632LW	1	Lower Operating Handle
17	0101	3	Self-locking nut M8
18	0155	8	Flat washer M8
19	2611Kompl.	1	Excentric housing complete (19, 21, 22, 23 & 25)
20	1100000008	1	Coupling drive pin
21	2619	1	Bearing (small)
22	2612	1	Excentric shaft
23	2314	1	Bearing (big)
24	0278	4	Socket head bolt M8x30
25	0201	1	Retaining ring 17x1mm.
26	0213	4	Toothring M8
27	2604LW	1	Excentric assembly plate 350mm long
28	2610LW	1	Strip with nuts for alu.clamp 350mm long
29	2608N	2	Support block
30	0325	3	Wing nut M6x12
31	2609N	1	Cover of excentric
32	2602	1	Set of end caps
33	2602LW	2	Set of seals in Alu.profile (one side) only for LW profile
33	2602A	2	Set of seals in Alu.profile (one side)
34	260015	1	DuoScreed profile 1.5 mtr. – 5 feet
	260020	1	Idem, but 1.9 mtr.
	260025	1	Idem, but 2.5 mtr.
	260030	1	Idem, but 3.0 mtr.
	260035	1	Idem, but 3.75 mtr.
	260040	1	Idem, but 4.25 mtr.
	260050	1	Idem, but 5.0 mtr.
	260055	1	Idem, but 5.50 mtr.
	260060	1	Idem, but 6.0 mtr.
	260015LW	1	Idem, but 1,52 mtr. = 5ft exact
	260018LW	1	Idem, but 1,83 mtr. = 6ft „
	260024LW	1	Idem, but 2,44 mtr. = 8ft „
	260030LW	1	Idem, but 3,05 mtr. = 10ft „
	260036LW	1	Idem, but 3,66 mtr. = 12ft „
	260042LW	1	Idem, but 4,27 mtr. = 14ft „
	260048LW	1	Idem, but 4,88 mtr. = 16ft „
35	0277	12	Self tapping screw M5x20
37	0129	3	Tapbolt M8x40
38	2614	1	Hinge bushing for excentric
39	0177	1	Nut M12 (fine)
41	2613	1	Clamping bush for excentric

Table 2 Spare parts DuoScreed with Petrol engine

DuoScreed Power-unit with Honda Petrol engine

Ref.	Part. no.	Qty.	Description
42	0175	1	Retaining ring M12
43	2615A	1	Excentric plate (small)
44	2615B	1	Excentric plate (big)
45	0207	4	Countersunk head screw 8.8 M8x25
46	2617	3	Plastic protection cap M12
47	2607	3	Compression spring for clamping strip
48	2605LW	1	Alu. clamping strip
49	0176	3	Washer M12x6
50	2606	3	Wing bolt
51	0285	4	Tap bolt M8x12
52	0212	8	Internal toothing ring M8
53	0056	4	Rubber buffer 30x30 M8
54	0124	4	Tap bolt M8x10
56	2643A	1	Earth wire for stop switch
57	2643	1	Stop switch
58	2658	1	ON-OFF indication plate
59	0283	2	Carriage bolt M8x50
60	0089	2	Self locking flange nut M6
63	2635	2	Lower Alu. clamp
65	0181	1	Tap bolt M6x30
66	0100	1	Self locking nut M6
67	2635A	2	Upper Alu. clamp
68	0284	2	Socket head bolt M6x40
69	2636	2	Clamp for height adjustment
71	0167	1	Screw M5x16
72	0099	1	Self locking nut M5
73	2637LW	1	Supporting leg
74	2644	1	Gas throttle adjustment bolt
75	2639	1	Clamp for supporting leg
76	2634	1	Rubber protection cap for supporting leg
77	2646	1	Engine RPM. blocking bush excluding 0239 screw M3 * 16
78	2321H	1	Switch bracket Honda GX-35
79	260075LW	1	Lifting handle steel
80	0269	1	Socket head bolt M5 x 12
81	0206	8	Square nut M8
82	26061	1	Spring clip for eccentric cover

Table 2 Spare parts DuoScreed with petrol engine.